

MCAD Polyclonal Antibody

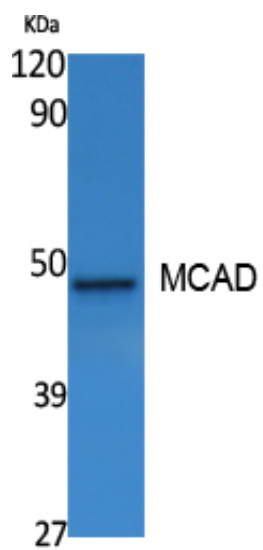
Catalog_no :	AT5024
Applications :	WB,ELISA
Reactivity :	Human,Mouse,Rat
Category :	抗原抗体
Size :	100µg/50µg/20µg
Gene_name :	ACADM
Protein_name :	Medium-chain specific acyl-CoA dehydrogenase mitochondrial
Humangene_id	34
:	
Humanswissprot	P11310
_no :	
Mousegene_id :	11364
Mouseswissprot	P45952
_no :	
Ratgene_id :	24158
Ratswissprot_no	P08503
:	
Immunogen :	The antiserum was produced against synthesized peptide derived from human MCAD. AA range:134-183
Specificity :	MCAD Polyclonal Antibody detects endogenous levels of MCAD protein.
Formulation :	Liquid in PBS containing 50% glycerol, 0.5% BSA and 0.02% sodium azide.
Source :	Rabbit
Dilution :	Western Blot: 1/500 - 1/2000. ELISA: 1/20000. Not yet tested in other applications.
Purification :	The antibody was affinity-purified from rabbit antiserum by affinity-chromatography using epitope-specific immunogen.
Concentration :	1 mg/ml
Storage_stability	-20°C/1 year
:	
Msds :	MSDS_Antibody.pdf



Other_name : ACADM; Medium-chain specific acyl-CoA dehydrogenase, mitochondrial; MCAD

Molecular Weight : 46KD

Product Images



Western Blot analysis of extracts from A549 cells, using MCAD Polyclonal Antibody.. Secondary antibody was diluted at 1:20000