

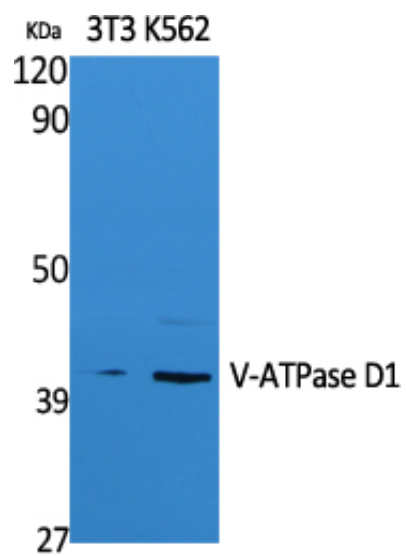
V-ATPase D1 Polyclonal Antibody

Catalog_no :	AT5026
Applications :	WB,ELISA
Reactivity :	Human,Mouse,Rat
Category :	抗原抗体
Size :	100µg/50µg/20µg
Gene_name :	ATP6V0D1
Protein_name :	V-type proton ATPase subunit d 1
Humangene_id :	9114
Humanswissprot_no :	P61421
Mousegene_id :	11972
Mouseswissprot_no :	P51863
Immunogen :	The antiserum was produced against synthesized peptide derived from human V-ATPase D1. AA range:221-270
Specificity :	V-ATPase D1 Polyclonal Antibody detects endogenous levels of V-ATPase D1 protein.
Formulation :	Liquid in PBS containing 50% glycerol, 0.5% BSA and 0.02% sodium azide.
Source :	Rabbit
Dilution :	Western Blot: 1/500 - 1/2000. ELISA: 1/20000. Not yet tested in other applications.
Purification :	The antibody was affinity-purified from rabbit antiserum by affinity-chromatography using epitope-specific immunogen.
Concentration :	1 mg/ml
Storage_stability :	-20°C/1 year
Msds :	MSDS_Antibody.pdf
Other_name :	ATP6V0D1; ATP6D; VPATPD; V-type proton ATPase subunit d 1; V-ATPase subunit d 1; 32 kDa accessory protein; V-ATPase 40 kDa accessory protein; V-ATPase AC39 subunit; p39; Vacuolar proton pump subunit d 1
Molecular	40KD



Weight :

Product Images



Western Blot analysis of extracts from NIH-3T3, K562 cells, using V-ATPase D1 Polyclonal Antibody.. Secondary antibody was diluted at 1:20000