



CHD1L Polyclonal Antibody

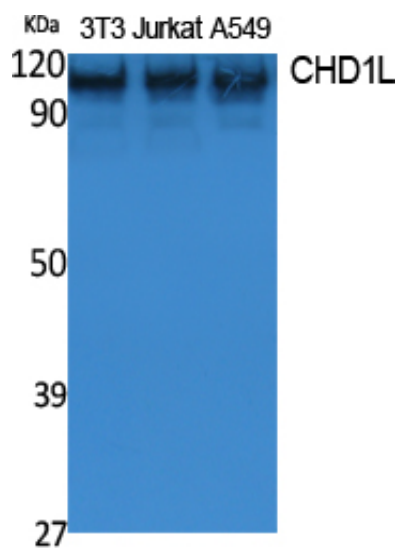
| | |
|---------------------|--|
| Catalog_no : | <u>AT5027</u> |
| Applications : | <u>WB,ELISA</u> |
| Reactivity : | <u>Human,Mouse</u> |
| Category : | <u>抗原抗体</u> |
| Size : | <u>100µg/50µg/20µg</u> |
| Gene_name : | <u>CHD1L</u> |
| Protein_name : | <u>Chromodomain-helicase-DNA-binding protein 1-like</u> |
| Humangene_id : | <u>9557</u> |
| Humanswissprot_no : | <u>Q86WJ1</u> |
| Mousegene_id : | <u>68058</u> |
| Mouseswissprot_no : | <u>Q9CXF7</u> |
| Immunogen : | <u>The antiserum was produced against synthesized peptide derived from human CHD1L. AA range:545-594</u> |
| Specificity : | <u>CHD1L Polyclonal Antibody detects endogenous levels of CHD1L protein.</u> |
| Formulation : | <u>Liquid in PBS containing 50% glycerol, 0.5% BSA and 0.02% sodium azide.</u> |
| Source : | <u>Rabbit</u> |
| Dilution : | <u>Western Blot: 1/500 - 1/2000. ELISA: 1/20000. Not yet tested in other applications.</u> |
| Purification : | <u>The antibody was affinity-purified from rabbit antiserum by affinity-chromatography using epitope-specific immunogen.</u> |
| Concentration : | <u>1 mg/ml</u> |
| Storage_stability : | <u>-20°C/1 year</u> |
| Msds : | <u>MSDS_Antibody.pdf</u> |
| Other_name : | <u>CHD1L; ALC1; Chromodomain-helicase-DNA-binding protein 1-like; Amplified in liver cancer protein 1</u> |
| Molecular Weight : | <u>101KD</u> |



专注二抗产品

Biodragon旗下品牌

Product Images



Western Blot analysis of extracts from NIH-3T3, Jurkat, A549 cells, using CHD1L Polyclonal Antibody.. Secondary antibody was diluted at 1:20000 cells nucleus extracted by Minute TM Cytoplasmic and Nuclear Fractionation kit (SC-003, Inventbiotech, MN, USA).