

EEA1 Polyclonal Antibody

Catalog_no :	AT5028
Applications :	WB,ELISA
Reactivity :	Human,Mouse
Category :	抗原抗体
Size :	100µg/50µg/20µg
Gene_name :	EEA1
Protein_name :	Early endosome antigen 1
Humangene_id :	8411
Humanswissprot_no :	Q15075
Mousegene_id :	216238
Mouseswissprot_no :	Q8BL66
Immunogen :	The antiserum was produced against synthesized peptide derived from human EEA1. AA range:205-254
Specificity :	EEA1 Polyclonal Antibody detects endogenous levels of EEA1 protein.
Formulation :	Liquid in PBS containing 50% glycerol, 0.5% BSA and 0.02% sodium azide.
Source :	Rabbit
Dilution :	Western Blot: 1/500 - 1/2000. ELISA: 1/20000. Not yet tested in other applications.
Purification :	The antibody was affinity-purified from rabbit antiserum by affinity-chromatography using epitope-specific immunogen.
Concentration :	1 mg/ml
Storage_stability :	-20°C/1 year
Msds :	MSDS_Antibody.pdf
Other_name :	EEA1; ZFYVE2; Early endosome antigen 1; Endosome-associated protein p162; Zinc finger FYVE domain-containing protein 2
Molecular Weight :	162KD

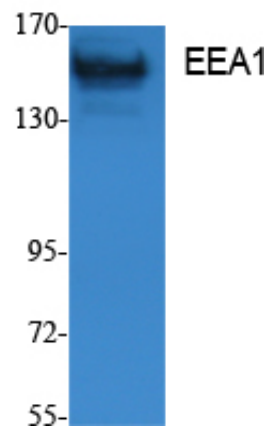


专注二抗产品

Biodragon旗下品牌

Product Images

(kD)



Western Blot analysis of extracts from K562 cells, using EEA1 Polyclonal Antibody.. Secondary antibody was diluted at 1:20000