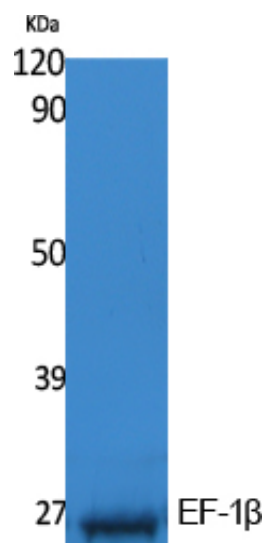




EF-1 β Polyclonal Antibody

Catalog_no :	<u>AT5029</u>
Applications :	<u>WB,ELISA</u>
Reactivity :	<u>Human,Mouse,Rat</u>
Category :	<u>抗原抗体</u>
Size :	<u>100μg/50μg/20μg</u>
Gene_name :	<u>EEF1B2</u>
Protein_name :	<u>Elongation factor 1-beta</u>
Humangene_id :	<u>1933</u>
Humanswissprot_no :	<u>P24534</u>
Mousegene_id :	<u>55949</u>
Mouseswissprot_no :	<u>O70251</u>
Immunogen :	<u>The antiserum was produced against synthesized peptide derived from human EF-1beta. AA range:83-132</u>
Specificity :	<u>EF-1β Polyclonal Antibody detects endogenous levels of EF-1β protein.</u>
Formulation :	<u>Liquid in PBS containing 50% glycerol, 0.5% BSA and 0.02% sodium azide.</u>
Source :	<u>Rabbit</u>
Dilution :	<u>Western Blot: 1/500 - 1/2000. ELISA: 1/20000. Not yet tested in other applications.</u>
Purification :	<u>The antibody was affinity-purified from rabbit antiserum by affinity-chromatography using epitope-specific immunogen.</u>
Concentration :	<u>1 mg/ml</u>
Storage_stability :	<u>-20°C/1 year</u>
Msds :	<u>MSDS_Antibody.pdf</u>
Other_name :	<u>EEF1B2; EEF1B; EF1B; Elongation factor 1-beta; EF-1-beta</u>
Molecular Weight :	<u>24KD</u>

Product Images



Western Blot analysis of extracts from K562 cells, using EF-1 β Polyclonal Antibody.. Secondary antibody was diluted at 1:20000