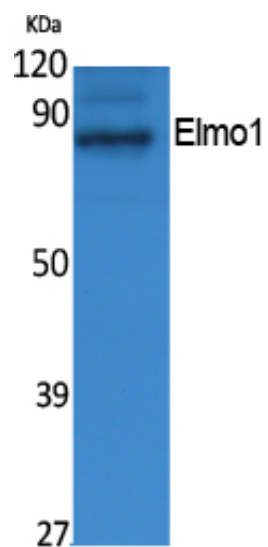


## Elmo1 Polyclonal Antibody

Catalog_no :	AT5030
Applications :	WB,ELISA
Reactivity :	Human,Mouse
Category :	抗原抗体
Size :	100µg/50µg/20µg
Gene_name :	ELMO1
Protein_name :	Engulfment and cell motility protein 1
Humangene_id :	<a href="#">9844</a>
Humanswissprot_no :	<a href="#">Q92556</a>
Mousegene_id :	<a href="#">140580</a>
Mouseswissprot_no :	<a href="#">Q8BPU7</a>
Immunogen :	The antiserum was produced against synthesized peptide derived from human Elmo1. AA range:22-71
Specificity :	Elmo1 Polyclonal Antibody detects endogenous levels of Elmo1 protein.
Formulation :	Liquid in PBS containing 50% glycerol, 0.5% BSA and 0.02% sodium azide.
Source :	Rabbit
Dilution :	Western Blot: 1/500 - 1/2000. ELISA: 1/20000. Not yet tested in other applications.
Purification :	The antibody was affinity-purified from rabbit antiserum by affinity-chromatography using epitope-specific immunogen.
Concentration :	1 mg/ml
Storage_stability :	-20°C/1 year
Msds :	<a href="#">MSDS_Antibody.pdf</a>
Other_name :	ELMO1; KIAA0281; Engulfment and cell motility protein 1; Protein ced-12 homolog
Molecular Weight :	83KD

## Product Images



Western Blot analysis of extracts from NIH-3T3 cells, using Elmo1 Polyclonal Antibody.. Secondary antibody was diluted at 1:20000