

ENT1 Polyclonal Antibody

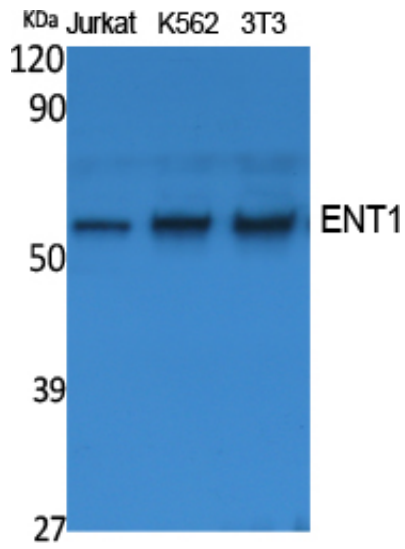
| | |
|---------------------|---|
| Catalog_no : | AT5031 |
| Applications : | WB,ELISA |
| Reactivity : | Human,Mouse,Rat |
| Category : | 抗原抗体 |
| Size : | 100µg/50µg/20µg |
| Gene_name : | SLC29A1 |
| Protein_name : | Equilibrative nucleoside transporter 1 |
| Humangene_id : | 2030 |
| Humanswissprot_no : | Q99808 |
| Mousegene_id : | 63959 |
| Mouseswissprot_no : | Q9JIM1 |
| Ratgene_id : | 63997 |
| Ratswissprot_no : | O54698 |
| Immunogen : | The antiserum was produced against synthesized peptide derived from human ENT1. AA range:15-64 |
| Specificity : | ENT1 Polyclonal Antibody detects endogenous levels of ENT1 protein. |
| Formulation : | Liquid in PBS containing 50% glycerol, 0.5% BSA and 0.02% sodium azide. |
| Source : | Rabbit |
| Dilution : | Western Blot: 1/500 - 1/2000. ELISA: 1/20000. Not yet tested in other applications. |
| Purification : | The antibody was affinity-purified from rabbit antiserum by affinity-chromatography using epitope-specific immunogen. |
| Concentration : | 1 mg/ml |
| Storage_stability : | -20°C/1 year |
| Msds : | MSDS_Antibody.pdf |



Other_name : SLC29A1; ENT1; Equilibrative nucleoside transporter 1; Equilibrative nitrobenzylmercaptapurine riboside-sensitive nucleoside transporter; Equilibrative NBMPR-sensitive nucleoside transporter; Nucleoside transporter, es-type; Solute carrier family 29 member 1

Molecular Weight : 55KD

Product Images



Western Blot analysis of extracts from Jurkat, K562, NIH-3T3 cells, using ENT1 Polyclonal Antibody. Antibody was diluted at 1:2000. Secondary antibody was diluted at 1:20000