



ENaC γ Polyclonal Antibody

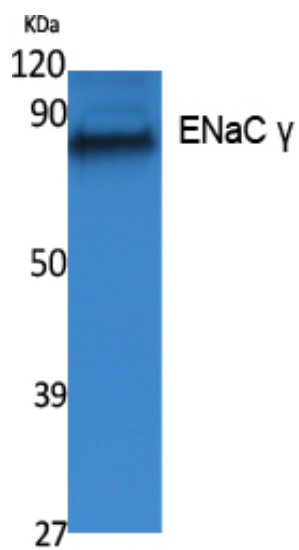
Catalog_no :	<u>AT5032</u>
Applications :	<u>WB,ELISA</u>
Reactivity :	<u>Human,Mouse,Rat</u>
Category :	<u>抗原抗体</u>
Size :	<u>100μg/50μg/20μg</u>
Gene_name :	<u>SCNN1G</u>
Protein_name :	<u>Amiloride-sensitive sodium channel subunit gamma</u>
Humangene_id :	<u>6340</u>
Humanswissprot_no :	<u>P51170</u>
Mousegene_id :	<u>20278</u>
Mouseswissprot_no :	<u>Q9WU39</u>
Ratgene_id :	<u>24768</u>
Ratswissprot_no :	<u>P37091</u>
Immunogen :	<u>The antiserum was produced against synthesized peptide derived from human ENaC gamma. AA range:132-181</u>
Specificity :	<u>ENaC γ Polyclonal Antibody detects endogenous levels of ENaC γ protein.</u>
Formulation :	<u>Liquid in PBS containing 50% glycerol, 0.5% BSA and 0.02% sodium azide.</u>
Source :	<u>Rabbit</u>
Dilution :	<u>Western Blot: 1/500 - 1/2000. ELISA: 1/20000. Not yet tested in other applications.</u>
Purification :	<u>The antibody was affinity-purified from rabbit antiserum by affinity-chromatography using epitope-specific immunogen.</u>
Concentration :	<u>1 mg/ml</u>
Storage_stability :	<u>-20°C/1 year</u>
Msds :	<u>MSDS_Antibody.pdf</u>



Other_name : SCNN1G; Amiloride-sensitive sodium channel subunit gamma; Epithelial Na(+) channel subunit gamma; ENaCG; Gamma-ENaC; Gamma-NaCH; Nonvoltage-gated sodium channel 1 subunit gamma; SCNEG

Molecular Weight : 80KD

Product Images



Western Blot analysis of extracts from A549 cells, using ENaC γ Polyclonal Antibody. Antibody was diluted at 1:500. Secondary antibody was diluted at 1:20000