



FTO Polyclonal Antibody

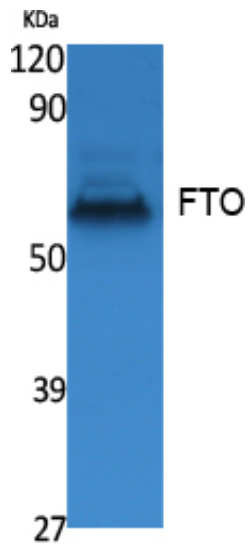
Catalog_no :	<u>AT5033</u>
Applications :	<u>WB,ELISA</u>
Reactivity :	<u>Human,Mouse,Rat</u>
Category :	<u>抗原抗体</u>
Size :	<u>100µg/50µg/20µg</u>
Gene_name :	<u>FTO</u>
Protein_name :	<u>Alpha-ketoglutarate-dependent dioxygenase FTO</u>
Humangene_id :	<u>79068</u>
Humanswissprot_no :	<u>Q9C0B1</u>
Mousegene_id :	<u>26383</u>
Mouseswissprot_no :	<u>Q8BGW1</u>
Ratgene_id :	<u>291905</u>
Ratswissprot_no :	<u>Q2A121</u>
Immunogen :	<u>The antiserum was produced against synthesized peptide derived from human FTO. AA range:19-68</u>
Specificity :	<u>FTO Polyclonal Antibody detects endogenous levels of FTO protein.</u>
Formulation :	<u>Liquid in PBS containing 50% glycerol, 0.5% BSA and 0.02% sodium azide.</u>
Source :	<u>Rabbit</u>
Dilution :	<u>Western Blot: 1/500 - 1/2000. ELISA: 1/20000. Not yet tested in other applications.</u>
Purification :	<u>The antibody was affinity-purified from rabbit antiserum by affinity-chromatography using epitope-specific immunogen.</u>
Concentration :	<u>1 mg/ml</u>
Storage_stability :	<u>-20°C/1 year</u>
Msds :	<u>MSDS_Antibody.pdf</u>



Other_name : FTO; KIAA1752; Alpha-ketoglutarate-dependent dioxygenase FTO; Fat mass and obesity-associated protein

Molecular Weight : 58KD

Product Images



Western Blot analysis of extracts from K562 cells, using FTO Polyclonal Antibody.. Secondary antibody was diluted at 1:20000