



GDI-1 Polyclonal Antibody

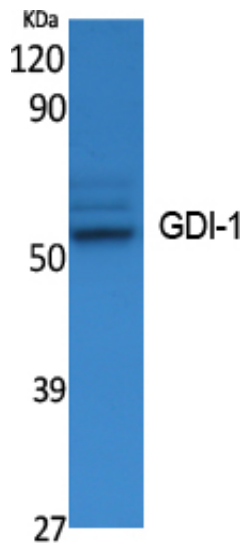
Catalog_no :	AT5034
Applications :	WB,ELISA
Reactivity :	Human,Mouse,Rat
Category :	抗原抗体
Size :	100µg/50µg/20µg
Gene_name :	GDI1
Protein_name :	Rab GDP dissociation inhibitor alpha
Humangene_id :	2664
Humanswissprot_no :	P31150
Mousegene_id :	14567
Mouseswissprot_no :	P50396
Ratgene_id :	25183
Ratswissprot_no :	P50398
Immunogen :	The antiserum was produced against synthesized peptide derived from human GDI-1. AA range:394-443
Specificity :	GDI-1 Polyclonal Antibody detects endogenous levels of GDI-1 protein.
Formulation :	Liquid in PBS containing 50% glycerol, 0.5% BSA and 0.02% sodium azide.
Source :	Rabbit
Dilution :	Western Blot: 1/500 - 1/2000. ELISA: 1/20000. Not yet tested in other applications.
Purification :	The antibody was affinity-purified from rabbit antiserum by affinity-chromatography using epitope-specific immunogen.
Concentration :	1 mg/ml
Storage_stability :	-20°C/1 year
Msds :	MSDS_Antibody.pdf



Other_name : GDI1; GDIL; OPHN2; RABGDIA; XAP4; Rab GDP dissociation inhibitor alpha; Rab GDI alpha; Guanosine diphosphate dissociation inhibitor 1; GDI-1; Oligophrenin-2; Protein XAP-4

Molecular Weight : 50KD

Product Images



Western Blot analysis of extracts from K562 cells, using GDI-1 Polyclonal Antibody.. Secondary antibody was diluted at 1:20000