

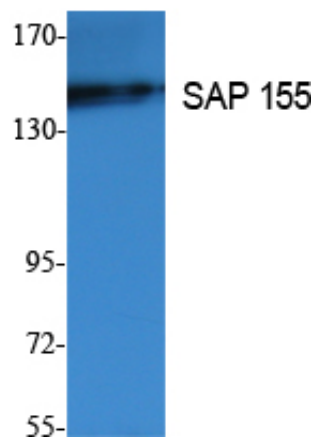


## SAP 155 Polyclonal Antibody

Catalog_no :	AT5038
Applications :	WB,ELISA
Reactivity :	Human,Mouse
Category :	抗原抗体
Size :	100µg/50µg/20µg
Gene_name :	SF3B1
Protein_name :	Splicing factor 3B subunit 1
Humangene_id :	<a href="#">23451</a>
Humanswissprot_no :	<a href="#">O75533</a>
Mouseswissprot_no :	<a href="#">Q99NB9</a>
Immunogen :	The antiserum was produced against synthesized peptide derived from human SAP 155. AA range:75-124
Specificity :	SAP 155 Polyclonal Antibody detects endogenous levels of SAP 155 protein.
Formulation :	Liquid in PBS containing 50% glycerol, 0.5% BSA and 0.02% sodium azide.
Source :	Rabbit
Dilution :	Western Blot: 1/500 - 1/2000. ELISA: 1/20000. Not yet tested in other applications.
Purification :	The antibody was affinity-purified from rabbit antiserum by affinity-chromatography using epitope-specific immunogen.
Concentration :	1 mg/ml
Storage_stability :	-20°C/1 year
Msds :	MSDS_Antibody.pdf
Other_name :	SF3B1; SAP155; Splicing factor 3B subunit 1; Pre-mRNA-splicing factor SF3b 155 kDa subunit; SF3b155; Spliceosome-associated protein 155; SAP 155
Molecular Weight :	145KD

## Product Images

(kD)



Western Blot analysis of extracts from K562 cells, using SAP 155 Polyclonal Antibody.. Secondary antibody was diluted at 1:20000 cells nucleus extracted by Minute TM Cytoplasmic and Nuclear Fractionation kit (SC-003, Invent biotech, MN, USA).