

Brm Polyclonal Antibody

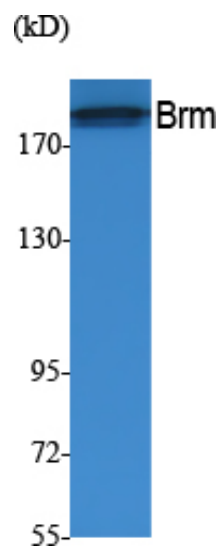
Catalog_no :	AT5039
Applications :	WB,ELISA
Reactivity :	Human,Mouse,Rat
Category :	抗原抗体
Size :	100µg/50µg/20µg
Gene_name :	SMARCA2
Protein_name :	Probable global transcription activator SNF2L2
Humangene_id :	6595
Humanswissprot_no :	P51531
Mousegene_id :	67155
Mouseswissprot_no :	Q6DIC0
Immunogen :	The antiserum was produced against synthesized peptide derived from human Brm. AA range:1328-1377
Specificity :	Brm Polyclonal Antibody detects endogenous levels of Brm protein.
Formulation :	Liquid in PBS containing 50% glycerol, 0.5% BSA and 0.02% sodium azide.
Source :	Rabbit
Dilution :	Western Blot: 1/500 - 1/2000. ELISA: 1/20000. Not yet tested in other applications.
Purification :	The antibody was affinity-purified from rabbit antiserum by affinity-chromatography using epitope-specific immunogen.
Concentration :	1 mg/ml
Storage_stability :	-20°C/1 year
Msds :	MSDS_Antibody.pdf
Other_name :	SMARCA2; BAF190B; BRM; SNF2A; SNF2L2; Probable global transcription activator SNF2L2; ATP-dependent helicase SMARCA2; BRG1-associated factor 190B; BAF190B;Protein brahma homolog; hBRM; SNF2-alpha; SWI/SNF-related matrix-associated actin-dependent regulator of chromatin subfamily A member 2



Molecular
Weight :

181KD

Product Images



Western Blot analysis of extracts from A549 cells, using Brm Polyclonal Antibody.. Secondary antibody was diluted at 1:20000 cells nucleus extracted by Minute TM Cytoplasmic and Nuclear Fractionation kit (SC-003, Invent biotech, MN, USA).