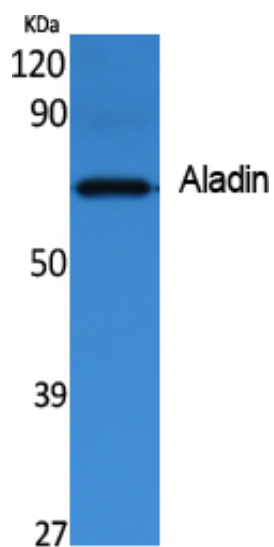


Aladin Polyclonal Antibody

Catalog_no :	AT5042
Applications :	WB,ELISA
Reactivity :	Human,Rat
Category :	抗原抗体
Size :	100µg/50µg/20µg
Gene_name :	AAAS
Protein_name :	Aladin
Humangene_id :	8086
Humanswissprot_no :	Q9NRG9
Immunogen :	Synthesized peptide derived from Aladin . at AA range: 360-440
Specificity :	Aladin Polyclonal Antibody detects endogenous levels of Aladin protein.
Formulation :	Liquid in PBS containing 50% glycerol, 0.5% BSA and 0.02% sodium azide.
Source :	Rabbit
Dilution :	Western Blot: 1/500 - 1/2000. ELISA: 1/40000. Not yet tested in other applications.
Purification :	The antibody was affinity-purified from rabbit antiserum by affinity-chromatography using epitope-specific immunogen.
Concentration :	1 mg/ml
Storage_stability :	-20°C/1 year
Msds :	MSDS_Antibody.pdf
Other_name :	AAAS; ADRACALA; GL003; Aladin; Adracalin
Molecular Weight :	59KD

Product Images



Western Blot analysis of extracts from rat kidney, using Aladin Polyclonal Antibody.. Secondary antibody was diluted at 1:20000 cells nucleus extracted by Minute TM Cytoplasmic and Nuclear Fractionation kit (SC-003, Inventbiotech, MN, USA).