

M6A Polyclonal Antibody

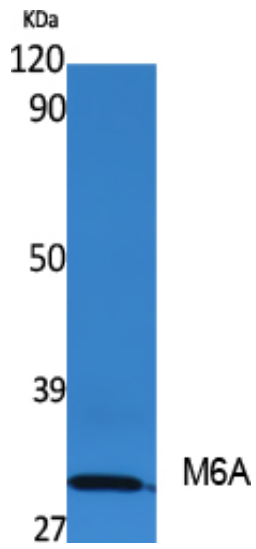
Catalog_no :	<u>AT5044</u>
Applications :	<u>WB,ELISA</u>
Reactivity :	<u>Human,Mouse,Rat</u>
Category :	<u>抗原抗体</u>
Size :	<u>100µg/50µg/20µg</u>
Gene_name :	<u>GPM6A</u>
Protein_name :	<u>Neuronal membrane glycoprotein M6-a</u>
Humangene_id	<u>2823</u>
:	<u></u>
Humanswissprot	<u>P51674</u>
_no :	<u></u>
Mousegene_id :	<u>234267</u>
Mouseswissprot	<u>P35802</u>
_no :	<u></u>
Ratgene_id :	<u>306439</u>
Ratswissprot_no	<u>Q812E9</u>
:	<u></u>
Immunogen :	<u>Synthesized peptide derived from M6A . at AA range: 140-220</u>
Specificity :	<u>M6A Polyclonal Antibody detects endogenous levels of M6A protein.</u>
Formulation :	<u>Liquid in PBS containing 50% glycerol, 0.5% BSA and 0.02% sodium azide.</u>
Source :	<u>Rabbit</u>
Dilution :	<u>Western Blot: 1/500 - 1/2000. ELISA: 1/5000. Not yet tested in other applications.</u>
Purification :	<u>The antibody was affinity-purified from rabbit antiserum by affinity-chromatography using epitope-specific immunogen.</u>
Concentration :	<u>1 mg/ml</u>
Storage_stability	<u>-20°C/1 year</u>
:	<u></u>
Msds :	<u>MSDS_Antibody.pdf</u>
Other_name :	<u>GPM6A; M6A; Neuronal membrane glycoprotein M6-a; M6a</u>



Molecular
Weight :

31KD

Product Images



Western Blot analysis of extracts from rat stomach, using M6A Polyclonal Antibody.. Secondary antibody was diluted at 1:20000