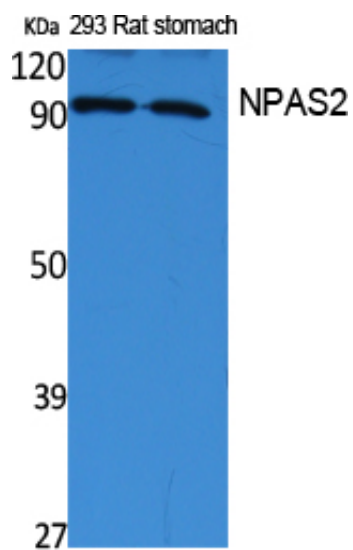




## NPAS2 Polyclonal Antibody

Catalog_no :	AT5045
Applications :	WB,ELISA
Reactivity :	Human,Rat
Category :	抗原抗体
Size :	100µg/50µg/20µg
Gene_name :	NPAS2
Protein_name :	Neuronal PAS domain-containing protein 2
Humangene_id :	<a href="#">4862</a>
Humanswissprot_no :	<a href="#">Q99743</a>
Immunogen :	Synthesized peptide derived from NPAS2 . at AA range: 340-420
Specificity :	NPAS2 Polyclonal Antibody detects endogenous levels of NPAS2 protein.
Formulation :	Liquid in PBS containing 50% glycerol, 0.5% BSA and 0.02% sodium azide.
Source :	Rabbit
Dilution :	Western Blot: 1/500 - 1/2000. ELISA: 1/5000. Not yet tested in other applications.
Purification :	The antibody was affinity-purified from rabbit antiserum by affinity-chromatography using epitope-specific immunogen.
Concentration :	1 mg/ml
Storage_stability :	-20°C/1 year
Msds :	MSDS_Antibody.pdf
Other_name :	NPAS2; BHLHE9; MOP4; PASD4; Neuronal PAS domain-containing protein 2; Neuronal PAS2; Basic-helix-loop-helix-PAS protein MOP4; Class E basic helix-loop-helix protein 9; bHLHe9; Member of PAS protein 4; PAS domain-containing protein 4
Molecular Weight :	91KD

## Product Images



Western Blot analysis of extracts from rat stomach, 293 cells, using NPAS2 Polyclonal Antibody.. Secondary antibody was diluted at 1:20000 cells nucleus extracted by Minute TM Cytoplasmic and Nuclear Fractionation kit (SC-003, Inventbiotech, MN, USA).