

AR- $\beta$ 2 Polyclonal Antibody

Catalog_no :	AT5048
Applications :	WB,ELISA
Reactivity :	Human,Mouse,Rat
Category :	抗原抗体
Size :	100 $\mu$ g/50 $\mu$ g/20 $\mu$ g
Gene_name :	ADRB2
Protein_name :	Beta-2 adrenergic receptor
Humangene_id	<a href="#">154</a>
:	
Humanswissprot	<a href="#">P07550</a>
_no :	
Mousegene_id :	<a href="#">11555</a>
Mouseswissprot	<a href="#">P18762</a>
_no :	
Ratswissprot_no	<a href="#">P10608</a>
:	
Immunogen :	Synthesized peptide derived from AR- $\beta$ 2 . at AA range: 300-380
Specificity :	AR- $\beta$ 2 Polyclonal Antibody detects endogenous levels of AR- $\beta$ 2 protein.
Formulation :	Liquid in PBS containing 50% glycerol, 0.5% BSA and 0.02% sodium azide.
Source :	Rabbit
Dilution :	Western Blot: 1/500 - 1/2000. ELISA: 1/5000. Not yet tested in other applications.
Purification :	The antibody was affinity-purified from rabbit antiserum by affinity-chromatography using epitope-specific immunogen.
Concentration :	1 mg/ml
Storage_stability	-20°C/1 year
:	
Msds :	MSDS_Antibody.pdf
Other_name :	ADRB2; ADRB2R; B2AR; Beta-2 adrenergic receptor; Beta-2 adrenoreceptor; Beta-2 adrenoceptor

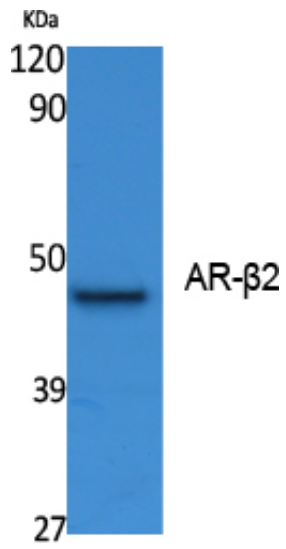


Molecular  
Weight :

46KD

---

## Product Images



Western Blot analysis of extracts from K562 cells, using AR-β2 Polyclonal Antibody.. Secondary antibody was diluted at 1:20000