

Plk1 Polyclonal Antibody

Catalog_no :	<u>AT5054</u>
Applications :	<u>WB,ELISA</u>
Reactivity :	<u>Human,Mouse,Rat</u>
Category :	<u>抗原抗体</u>
Size :	<u>100µg/50µg/20µg</u>
Gene_name :	<u>PLK1</u>
Protein_name :	<u>Serine/threonine-protein kinase PLK1</u>
Humangene_id :	<u>5347</u>
Humanswissprot_no :	<u>P53350</u>
Mousegene_id :	<u>18817</u>
Mouseswissprot_no :	<u>Q07832</u>
Ratgene_id :	<u>25515</u>
Ratswissprot_no :	<u>Q62673</u>
Immunogen :	<u>Synthesized peptide derived from Plk1 . at AA range: 80-160</u>
Specificity :	<u>Plk1 Polyclonal Antibody detects endogenous levels of Plk1 protein.</u>
Formulation :	<u>Liquid in PBS containing 50% glycerol, 0.5% BSA and 0.02% sodium azide.</u>
Source :	<u>Rabbit</u>
Dilution :	<u>Western Blot: 1/500 - 1/2000. ELISA: 1/20000. Not yet tested in other applications.</u>
Purification :	<u>The antibody was affinity-purified from rabbit antiserum by affinity-chromatography using epitope-specific immunogen.</u>
Concentration :	<u>1 mg/ml</u>
Storage_stability :	<u>-20°C/1 year</u>
Msds :	<u>MSDS_Antibody.pdf</u>
Other_name :	<u>PLK1; PLK; Serine/threonine-protein kinase PLK1; Polo-like kinase 1; PLK-1;</u>

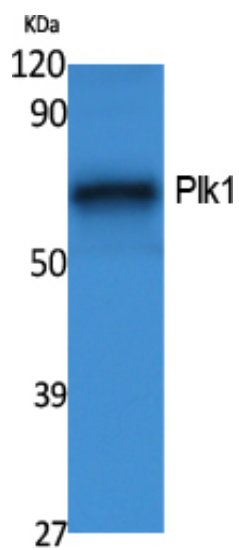


Serine/threonine-protein kinase 13; STPK13

Molecular
Weight :

68KD

Product Images



Western Blot analysis of extracts from NIH-3T3 cells, using Plk1 Polyclonal Antibody.. Secondary antibody was diluted at 1:20000