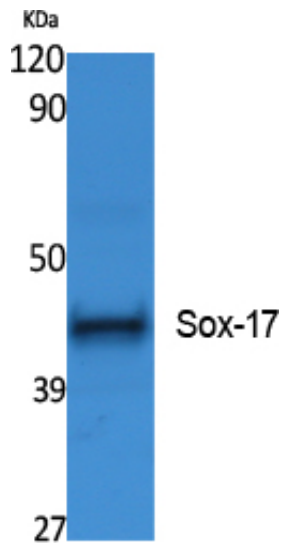




## Sox-17 Polyclonal Antibody

Catalog_no :	AT5055
Applications :	WB,ELISA
Reactivity :	Human,Mouse
Category :	抗原抗体
Size :	100µg/50µg/20µg
Gene_name :	SOX17
Protein_name :	Transcription factor SOX-17
Humangene_id :	<a href="#">64321</a>
Humanswissprot_no :	<a href="#">Q9H6I2</a>
Mousegene_id :	<a href="#">20671</a>
Mouseswissprot_no :	<a href="#">Q61473</a>
Immunogen :	Synthesized peptide derived from Sox-17 . at AA range: 90-170
Specificity :	Sox-17 Polyclonal Antibody detects endogenous levels of Sox-17 protein.
Formulation :	Liquid in PBS containing 50% glycerol, 0.5% BSA and 0.02% sodium azide.
Source :	Rabbit
Dilution :	Western Blot: 1/500 - 1/2000. ELISA: 1/20000. Not yet tested in other applications.
Purification :	The antibody was affinity-purified from rabbit antiserum by affinity-chromatography using epitope-specific immunogen.
Concentration :	1 mg/ml
Storage_stability :	-20°C/1 year
Msd_s :	MSDS_Antibody.pdf
Other_name :	SOX17; Transcription factor SOX-17
Molecular Weight :	44KD

## Product Images



Western Blot analysis of extracts from Jurkat cells, using Sox-17 Polyclonal Antibody.. Secondary antibody was diluted at 1:20000 cells nucleus extracted by Minute TM Cytoplasmic and Nuclear Fractionation kit (SC-003, Inventbiotech, MN, USA).