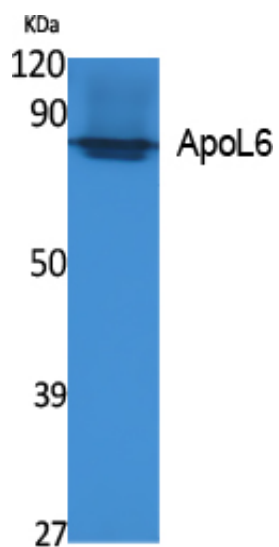




## ApoL6 Polyclonal Antibody

Catalog_no :	AT5059
Applications :	WB,ELISA
Reactivity :	Human
Category :	抗原抗体
Size :	100µg/50µg/20µg
Gene_name :	APOL6
Protein_name :	Apolipoprotein L6
Humangene_id :	<a href="#">80830</a>
Humanswissprot_no :	<a href="#">Q9BWW8</a>
Immunogen :	Synthesized peptide derived from ApoL6 . at AA range: 240-320
Specificity :	ApoL6 Polyclonal Antibody detects endogenous levels of ApoL6 protein.
Formulation :	Liquid in PBS containing 50% glycerol, 0.5% BSA and 0.02% sodium azide.
Source :	Rabbit
Dilution :	Western Blot: 1/500 - 1/2000. ELISA: 1/10000. Not yet tested in other applications.
Purification :	The antibody was affinity-purified from rabbit antiserum by affinity-chromatography using epitope-specific immunogen.
Concentration :	1 mg/ml
Storage_stability :	-20°C/1 year
Msds :	MSDS_Antibody.pdf
Other_name :	APOL6; Apolipoprotein L6; Apolipoprotein L-VI; ApoL-VI
Molecular Weight :	38KD

## Product Images



Western Blot analysis of extracts from K562 cells, using ApoL6 Polyclonal Antibody.. Secondary antibody was diluted at 1:20000