



ABCG1 Polyclonal Antibody

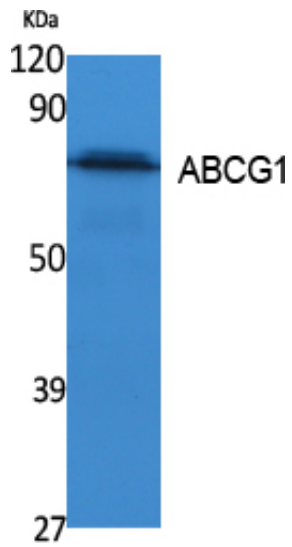
Catalog_no :	AT5060
Applications :	WB,IHC-p,ELISA
Reactivity :	Human,Mouse,Rat
Category :	抗原抗体
Size :	100µg/50µg/20µg
Gene_name :	ABCG1
Protein_name :	ATP-binding cassette sub-family G member 1
Humangene_id :	9619
Humanswissprot_no :	P45844
Mousegene_id :	11307
Mouseswissprot_no :	Q64343
Immunogen :	Synthesized peptide derived from ABCG1 . at AA range: 560-640
Specificity :	ABCG1 Polyclonal Antibody detects endogenous levels of ABCG1 protein.
Formulation :	Liquid in PBS containing 50% glycerol, 0.5% BSA and 0.02% sodium azide.
Source :	Rabbit
Dilution :	Western Blot: 1/500 - 1/2000. IHC-p: 1:100-300 ELISA: 1/10000. Not yet tested in other applications.
Purification :	The antibody was affinity-purified from rabbit antiserum by affinity-chromatography using epitope-specific immunogen.
Concentration :	1 mg/ml
Storage_stability :	-20°C/1 year
Msds :	MSDS_Antibody.pdf
Other_name :	ABCG1; ABC8; WHT1; ATP-binding cassette sub-family G member 1; ATP-binding cassette transporter 8; White protein homolog
Molecular Weight :	75KD



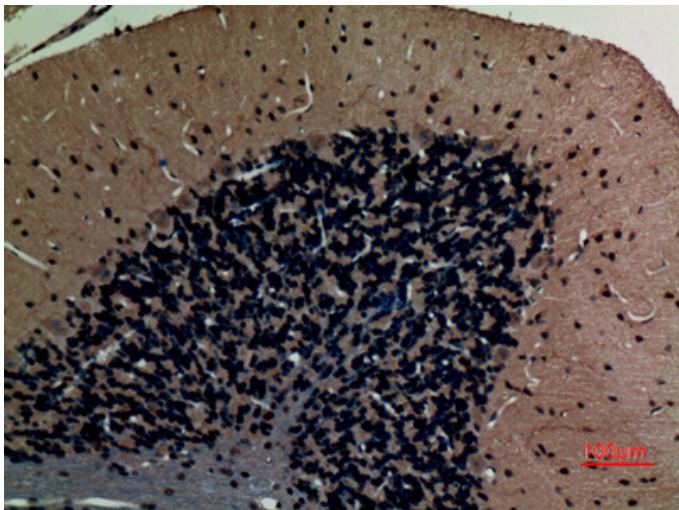
专注二抗产品

Biodragon旗下品牌

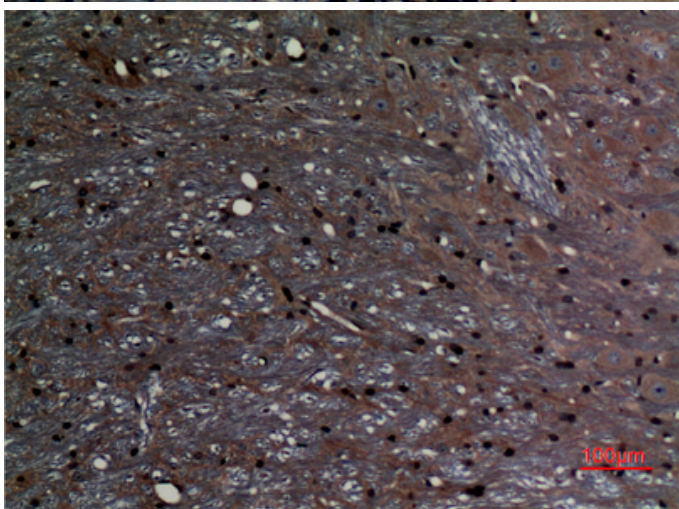
Product Images



Western Blot analysis of extracts from K562 cells, using ABCG1 Polyclonal Antibody.. Secondary antibody was diluted at 1:20000



Immunohistochemical analysis of paraffin-embedded rat-brain, antibody was diluted at 1:100



Immunohistochemical analysis of paraffin-embedded rat-brain, antibody was diluted at 1:100