

BOCT Polyclonal Antibody

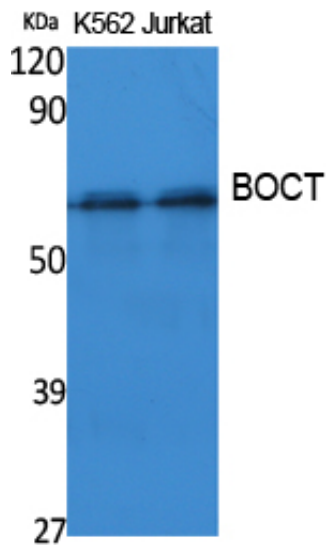
Catalog_no :	AT5062
Applications :	WB,IHC-p,ELISA
Reactivity :	Human,Mouse,Rat
Category :	抗原抗体
Size :	100µg/50µg/20µg
Gene_name :	SLC22A17
Protein_name :	Solute carrier family 22 member 17
Humangene_id	51310
:	
Humanswissprot	Q8WUG5
_no :	
Mousegene_id :	59049
Mouseswissprot	Q9D9E0
_no :	
Ratgene_id :	305886
Ratswissprot_no	Q9P290
:	
Immunogen :	Synthesized peptide derived from the Internal region of human BOCT.
Specificity :	BOCT Polyclonal Antibody detects endogenous levels of BOCT protein.
Formulation :	Liquid in PBS containing 50% glycerol, 0.5% BSA and 0.02% sodium azide.
Source :	Rabbit
Dilution :	Western Blot: 1/500 - 1/2000. IHC-p: 1:100-300 ELISA: 1/5000. Not yet tested in other applications.
Purification :	The antibody was affinity-purified from rabbit antiserum by affinity-chromatography using epitope-specific immunogen.
Concentration :	1 mg/ml
Storage_stability	-20°C/1 year
:	
Msds :	MSDS_Antibody.pdf



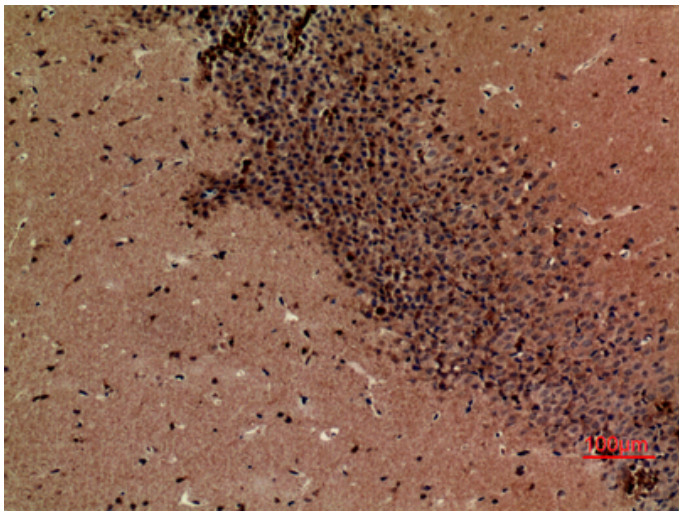
Other_name : SLC22A17; BOCT; BOIT; Solute carrier family 22 member 17; 24p3 receptor; 24p3R; Brain-type organic cation transporter; Lipocalin-2 receptor; Neutrophil gelatinase-associated lipocalin receptor; NgaiR

Molecular Weight : 57KD

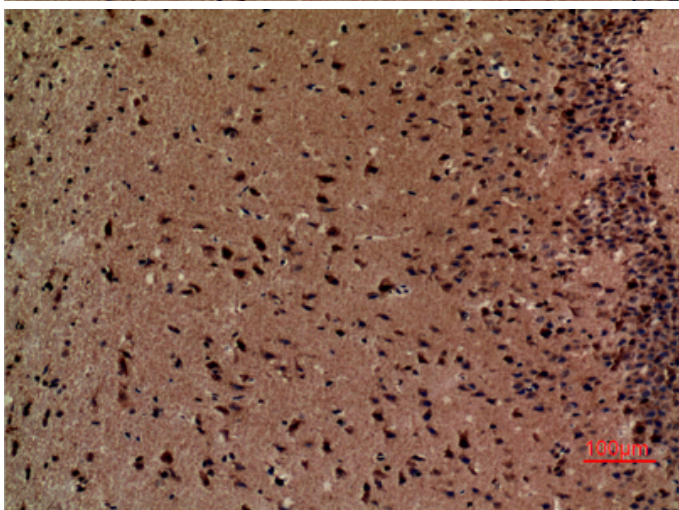
Product Images



Western Blot analysis of extracts from K562, Jurkat cells, using BOCT Polyclonal Antibody.. Secondary antibody was diluted at 1:20000



Immunohistochemical analysis of paraffin-embedded mouse-brain, antibody was diluted at 1:100



Immunohistochemical analysis of paraffin-embedded mouse-brain, antibody was diluted at 1:100