

CaMKII $\delta$  Polyclonal Antibody

Catalog_no :	AT5063
Applications :	WB,IHC-p,ELISA
Reactivity :	Human,Mouse,Rat
Category :	抗原抗体
Size :	100 $\mu$ g/50 $\mu$ g/20 $\mu$ g
Gene_name :	CAMK2D
Protein_name :	Calcium/calmodulin-dependent protein kinase type II subunit delta
Humangene_id	<a href="#">817</a>
:	
Humanswissprot	<a href="#">Q13557</a>
_no :	
Mousegene_id :	<a href="#">108058</a>
Mouseswissprot	<a href="#">Q6PHZ2</a>
_no :	
Ratgene_id :	<a href="#">24246</a>
Ratswissprot_no	<a href="#">P15791</a>
:	
Immunogen :	Synthesized peptide derived from the Internal region of human CaMKII $\delta$ .
Specificity :	CaMKII $\delta$ Polyclonal Antibody detects endogenous levels of CaMKII $\delta$ protein.
Formulation :	Liquid in PBS containing 50% glycerol, 0.5% BSA and 0.02% sodium azide.
Source :	Rabbit
Dilution :	Western Blot: 1/500 - 1/2000. IHC-p: 1:100-300 ELISA: 1/40000. Not yet tested in other applications.
Purification :	The antibody was affinity-purified from rabbit antiserum by affinity-chromatography using epitope-specific immunogen.
Concentration :	1 mg/ml
Storage_stability	-20°C/1 year
:	
Msds :	<a href="#">MSDS_Antibody.pdf</a>



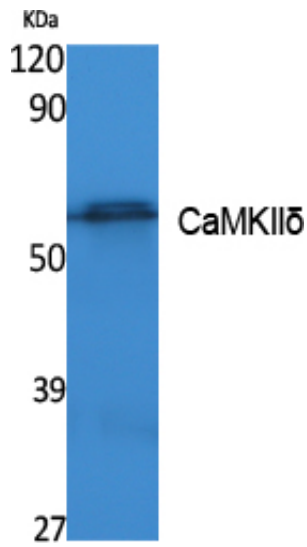
Other\_name : CAMK2D; CAMKD; Calcium/calmodulin-dependent protein kinase type II subunit delta;  
CaM kinase II subunit delta; CaMK-II subunit delta

---

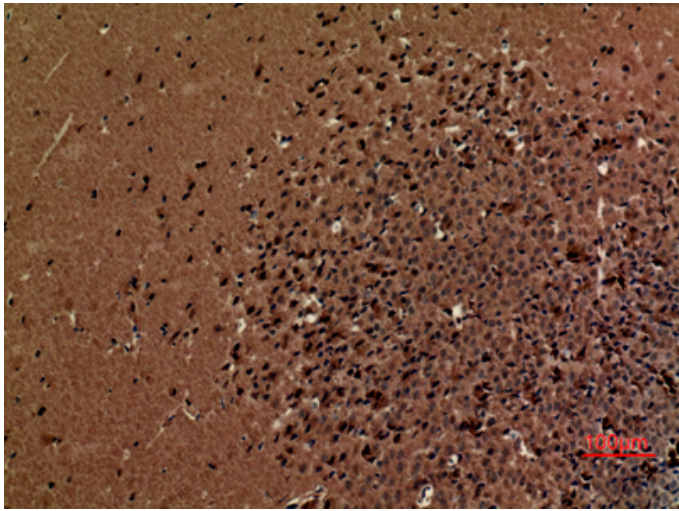
Molecular Weight : 56KD

---

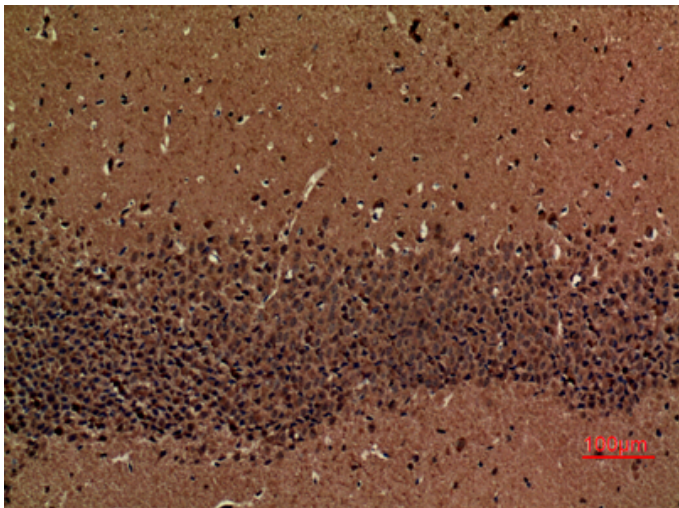
## Product Images



Western Blot analysis of extracts from K562 cells, using CaMKII $\delta$  Polyclonal Antibody.. Secondary antibody was diluted at 1:20000



Immunohistochemical analysis of paraffin-embedded mouse-brain, antibody was diluted at 1:100



Immunohistochemical analysis of paraffin-embedded mouse-brain, antibody was diluted at 1:100