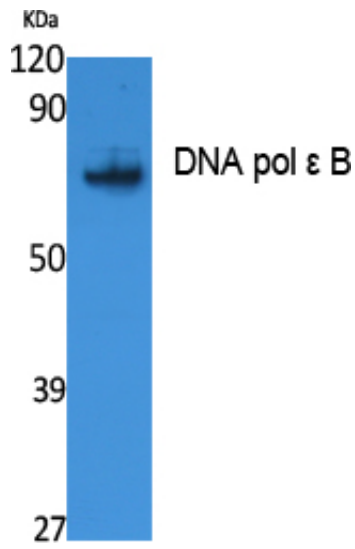




DNA pol ε B Polyclonal Antibody

Catalog_no :	AT5065
Applications :	WB,ELISA
Reactivity :	Human
Category :	抗原抗体
Size :	100μg/50μg/20μg
Gene_name :	POLE2
Protein_name :	DNA polymerase epsilon subunit 2
Humangene_id :	5427
Humanswissprot_no :	P56282
Immunogen :	Synthesized peptide derived from the Internal region of human DNA pol ε B.
Specificity :	DNA pol ε B Polyclonal Antibody detects endogenous levels of DNA pol ε B protein.
Formulation :	Liquid in PBS containing 50% glycerol, 0.5% BSA and 0.02% sodium azide.
Source :	Rabbit
Dilution :	Western Blot: 1/500 - 1/2000. ELISA: 1/40000. Not yet tested in other applications.
Purification :	The antibody was affinity-purified from rabbit antiserum by affinity-chromatography using epitope-specific immunogen.
Concentration :	1 mg/ml
Storage_stability :	-20°C/1 year
Msds :	MSDS_Antibody.pdf
Other_name :	POLE2; DPE2; DNA polymerase epsilon subunit 2; DNA polymerase II subunit 2; DNA polymerase epsilon subunit B
Molecular Weight :	59KD

Product Images



Western Blot analysis of extracts from Jurkat cells, using DNA pol ε B Polyclonal Antibody.. Secondary antibody was diluted at 1:20000 cells nucleus extracted by Minute TM Cytoplasmic and Nuclear Fractionation kit (SC-003, Invent biotech, MN, USA).