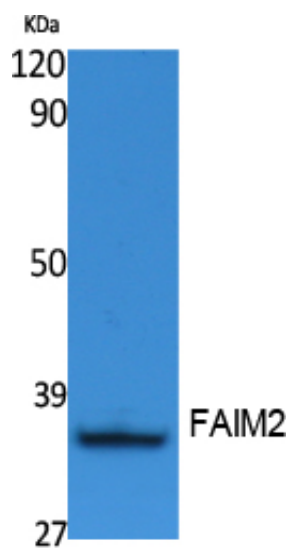


## FAIM2 Polyclonal Antibody

Catalog_no :	AT5067
Applications :	WB,ELISA
Reactivity :	Human
Category :	抗原抗体
Size :	100µg/50µg/20µg
Gene_name :	FAIM2
Protein_name :	Protein lifeguard 2
Humangene_id :	<a href="#">23017</a>
Humanswissprot_no :	<a href="#">Q9BWQ8</a>
Immunogen :	Synthesized peptide derived from the N-terminal region of human FAIM2.
Specificity :	FAIM2 Polyclonal Antibody detects endogenous levels of FAIM2 protein.
Formulation :	Liquid in PBS containing 50% glycerol, 0.5% BSA and 0.02% sodium azide.
Source :	Rabbit
Dilution :	Western Blot: 1/500 - 1/2000. ELISA: 1/20000. Not yet tested in other applications.
Purification :	The antibody was affinity-purified from rabbit antiserum by affinity-chromatography using epitope-specific immunogen.
Concentration :	1 mg/ml
Storage_stability :	-20°C/1 year
Msds :	MSDS_Antibody.pdf
Other_name :	FAIM2; KIAA0950; LFG; LFG2; NMP35; TMBIM2; Protein lifeguard 2; Fas apoptotic inhibitory molecule 2; Neural membrane protein 35; Transmembrane BAX inhibitor motif-containing protein 2
Molecular Weight :	35KD

## Product Images



Western Blot analysis of extracts from Jurkat cells, using FAIM2 Polyclonal Antibody.. Secondary antibody was diluted at 1:20000