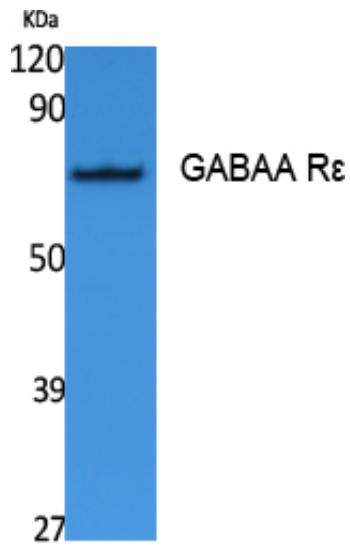


GABAA R $\epsilon$  Polyclonal Antibody

Catalog_no :	AT5068
Applications :	WB,ELISA
Reactivity :	Human
Category :	抗原抗体
Size :	100 $\mu$ g/50 $\mu$ g/20 $\mu$ g
Gene_name :	GABRE
Protein_name :	Gamma-aminobutyric acid receptor subunit epsilon
Humangene_id :	<a href="#">2564</a>
Humanswissprot_no :	<a href="#">P78334</a>
Immunogen :	Synthesized peptide derived from the Internal region of human GABAA range: R $\epsilon$ .
Specificity :	GABAA R $\epsilon$ Polyclonal Antibody detects endogenous levels of GABAA R $\epsilon$ protein.
Formulation :	Liquid in PBS containing 50% glycerol, 0.5% BSA and 0.02% sodium azide.
Source :	Rabbit
Dilution :	Western Blot: 1/500 - 1/2000. ELISA: 1/20000. Not yet tested in other applications.
Purification :	The antibody was affinity-purified from rabbit antiserum by affinity-chromatography using epitope-specific immunogen.
Concentration :	1 mg/ml
Storage_stability :	-20°C/1 year
Msds :	MSDS_Antibody.pdf
Other_name :	GABRE; Gamma-aminobutyric acid receptor subunit epsilon; GABA(A) receptor subunit epsilon
Molecular Weight :	57KD

## Product Images



Western Blot analysis of extracts from Jurkat cells, using GABAA Rε Polyclonal Antibody.. Secondary antibody was diluted at 1:20000