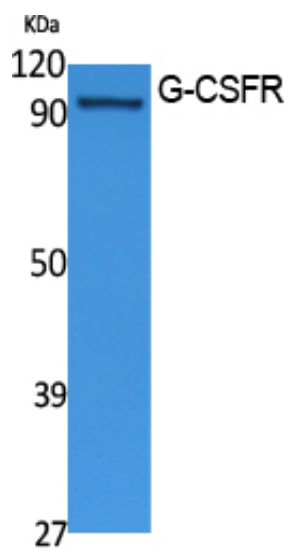




G-CSFR Polyclonal Antibody

Catalog_no :	AT5069
Applications :	WB,ELISA
Reactivity :	Human
Category :	抗原抗体
Size :	100µg/50µg/20µg
Gene_name :	CSF3R
Protein_name :	Granulocyte colony-stimulating factor receptor
Humangene_id	1441
:	
Humanswissprot	Q99062
_no :	
Immunogen :	Synthesized peptide derived from the Internal region of human G-CSFR.
Specificity :	G-CSFR Polyclonal Antibody detects endogenous levels of G-CSFR protein.
Formulation :	Liquid in PBS containing 50% glycerol, 0.5% BSA and 0.02% sodium azide.
Source :	Rabbit
Dilution :	Western Blot: 1/500 - 1/2000. ELISA: 1/10000. Not yet tested in other applications.
Purification :	The antibody was affinity-purified from rabbit antiserum by affinity-chromatography using epitope-specific immunogen.
Concentration :	1 mg/ml
Storage_stability	-20°C/1 year
:	
Msds :	MSDS_Antibody.pdf
Other_name :	CSF3R; GCSFR; Granulocyte colony-stimulating factor receptor; G-CSF receptor; G-CSF-R; CD antigen CD114
Molecular Weight :	92KD

Product Images



Western Blot analysis of extracts from Jurkat cells, using G-CSFR Polyclonal Antibody.. Secondary antibody was diluted at 1:20000