

SLP-76 Polyclonal Antibody

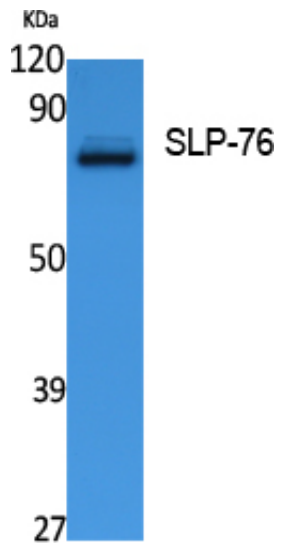
| | |
|---------------------|--|
| Catalog_no : | AT5071 |
| Applications : | WB,IHC-p,ELISA |
| Reactivity : | Human,Mouse,Rat |
| Category : | 抗原抗体 |
| Size : | 100µg/50µg/20µg |
| Gene_name : | LCP2 |
| Protein_name : | Lymphocyte cytosolic protein 2 |
| Humangene_id : | 3937 |
| Humanswissprot_no : | Q13094 |
| Mousegene_id : | 16822 |
| Mouseswissprot_no : | Q60787 |
| Immunogen : | Synthesized peptide derived from SLP-76 . at AA range: 270-350 |
| Specificity : | SLP-76 Polyclonal Antibody detects endogenous levels of SLP-76 protein. |
| Formulation : | Liquid in PBS containing 50% glycerol, 0.5% BSA and 0.02% sodium azide. |
| Source : | Rabbit |
| Dilution : | Western Blot: 1/500 - 1/2000. IHC-p: 1:100-300 ELISA: 1/10000. Not yet tested in other applications. |
| Purification : | The antibody was affinity-purified from rabbit antiserum by affinity-chromatography using epitope-specific immunogen. |
| Concentration : | 1 mg/ml |
| Storage_stability : | -20°C/1 year |
| Msds : | MSDS_Antibody.pdf |
| Other_name : | LCP2; Lymphocyte cytosolic protein 2; SH2 domain-containing leukocyte protein of 76 kDa; SLP-76 tyrosine phosphoprotein; SLP76 |
| Molecular Weight : | 60KD |



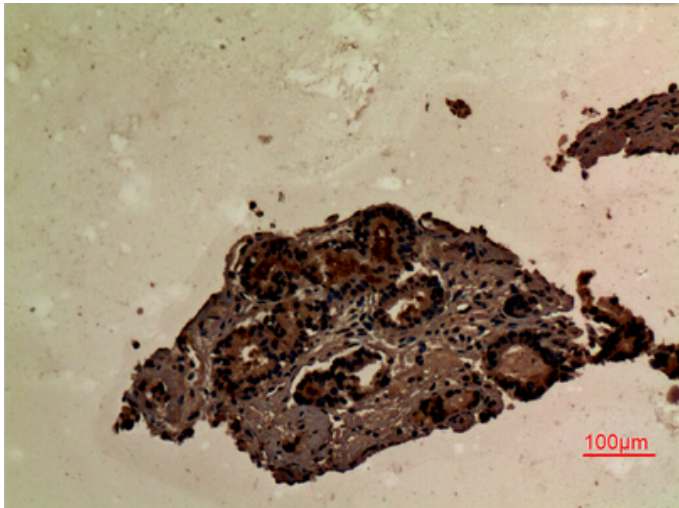
专注二抗产品

Biodragon旗下品牌

Product Images



Western Blot analysis of extracts from Jurkat cells, using SLP-76 Polyclonal Antibody.. Secondary antibody was diluted at 1:20000



Immunohistochemical analysis of paraffin-embedded human-prostate-cancer, antibody was diluted at 1:100