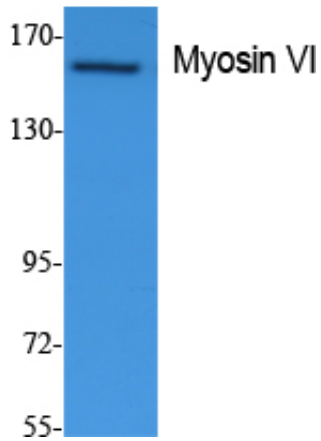


Myosin VI Polyclonal Antibody

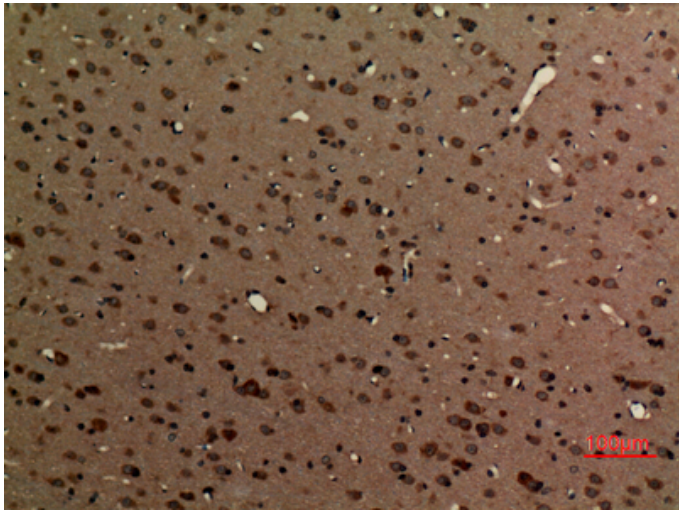
Catalog_no :	AT5072
Applications :	WB,IHC-p,ELISA
Reactivity :	Human,Mouse,Rat
Category :	抗原抗体
Size :	100µg/50µg/20µg
Gene_name :	MYO6
Protein_name :	Unconventional myosin-VI
Humangene_id	4646
:	
Humanswissprot	Q9UM54
_no :	
Mouseswissprot	Q64331
_no :	
Immunogen :	Synthesized peptide derived from Myosin VI . at AA range: 40-120
Specificity :	Myosin VI Polyclonal Antibody detects endogenous levels of Myosin VI protein.
Formulation :	Liquid in PBS containing 50% glycerol, 0.5% BSA and 0.02% sodium azide.
Source :	Rabbit
Dilution :	Western Blot: 1/500 - 1/2000. IHC-p: 1:100-300 ELISA: 1/5000. Not yet tested in other applications.
Purification :	The antibody was affinity-purified from rabbit antiserum by affinity-chromatography using epitope-specific immunogen.
Concentration :	1 mg/ml
Storage_stability	-20°C/1 year
:	
Msds :	MSDS_Antibody.pdf
Other_name :	MYO6; KIAA0389; Unconventional myosin-VI; Unconventional myosin-6
Molecular Weight :	149KD

Product Images

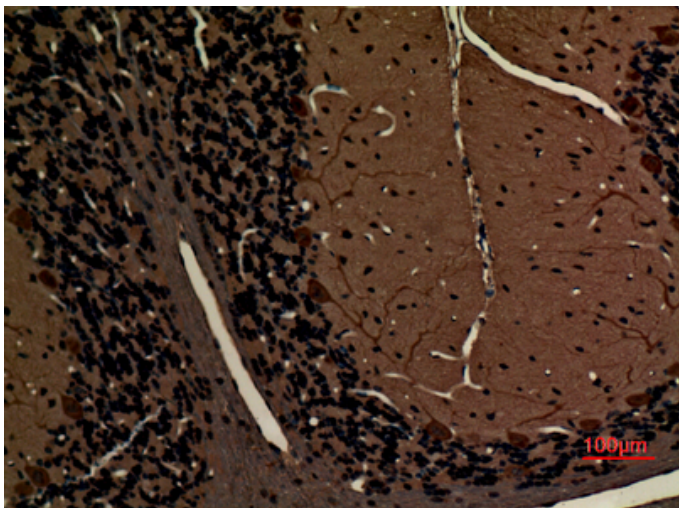
(kD)



Western Blot analysis of extracts from Jurkat cells, using Myosin VI Polyclonal Antibody.. Secondary antibody was diluted at 1:20000



Immunohistochemical analysis of paraffin-embedded rat-brain, antibody was diluted at 1:100



Immunohistochemical analysis of paraffin-embedded rat-brain, antibody was diluted at 1:100

Immunohistochemical analysis of paraffin-embedded rat-brain, antibody was diluted at 1:100

