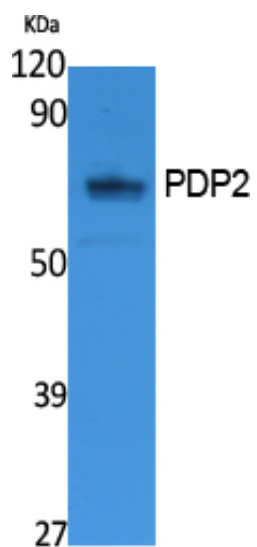




PDP2 Polyclonal Antibody

| | |
|---------------------|--|
| Catalog_no : | AT5074 |
| Applications : | WB,ELISA |
| Reactivity : | Human |
| Category : | 抗原抗体 |
| Size : | 100µg/50µg/20µg |
| Gene_name : | PDP2 |
| Protein_name : | [Pyruvate dehydrogenase [acetyl-transferring]]-phosphatase 2 mitochondrial |
| Humangene_id : | 57546 |
| Humanswissprot_no : | Q9P2J9 |
| Immunogen : | Synthesized peptide derived from PDP2 . at AA range: 70-150 |
| Specificity : | PDP2 Polyclonal Antibody detects endogenous levels of PDP2 protein. |
| Formulation : | Liquid in PBS containing 50% glycerol, 0.5% BSA and 0.02% sodium azide. |
| Source : | Rabbit |
| Dilution : | Western Blot: 1/500 - 1/2000. ELISA: 1/20000. Not yet tested in other applications. |
| Purification : | The antibody was affinity-purified from rabbit antiserum by affinity-chromatography using epitope-specific immunogen. |
| Concentration : | 1 mg/ml |
| Storage_stability : | -20°C/1 year |
| Msds : | MSDS_Antibody.pdf |
| Other_name : | PDP2; KIAA1348; [Pyruvate dehydrogenase [acetyl-transferring]]-phosphatase 2, mitochondrial; PDP 2; Pyruvate dehydrogenase phosphatase catalytic subunit 2; PDPC 2 |
| Molecular Weight : | 59KD |

Product Images



Western Blot analysis of extracts from K562 cells, using PDP2 Polyclonal Antibody.. Secondary antibody was diluted at 1:20000