



Rab 26 Polyclonal Antibody

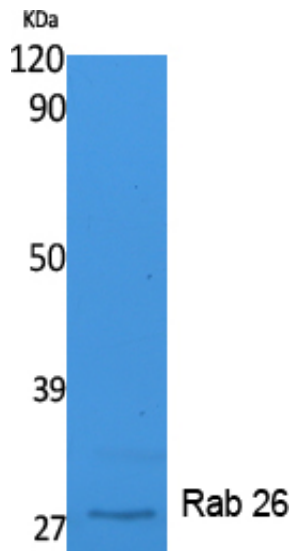
Catalog_no :	<u>AT5075</u>
Applications :	<u>WB,IHC-p,ELISA</u>
Reactivity :	<u>Human,Mouse,Rat</u>
Category :	<u>抗原抗体</u>
Size :	<u>100µg/50µg/20µg</u>
Gene_name :	<u>RAB26</u>
Protein_name :	<u>Ras-related protein Rab-26</u>
Humangene_id :	<u>25837</u>
Humanswissprot_no :	<u>Q9ULW5</u>
Mousegene_id :	<u>328778</u>
Mouseswissprot_no :	<u>Q504M8</u>
Ratgene_id :	<u>171111</u>
Ratswissprot_no :	<u>P51156</u>
Immunogen :	<u>Synthesized peptide derived from Rab 26 . at AA range: 180-260</u>
Specificity :	<u>Rab 26 Polyclonal Antibody detects endogenous levels of Rab 26 protein.</u>
Formulation :	<u>Liquid in PBS containing 50% glycerol, 0.5% BSA and 0.02% sodium azide.</u>
Source :	<u>Rabbit</u>
Dilution :	<u>Western Blot: 1/500 - 1/2000. IHC-p: 1:100-300 ELISA: 1/40000. Not yet tested in other applications.</u>
Purification :	<u>The antibody was affinity-purified from rabbit antiserum by affinity-chromatography using epitope-specific immunogen.</u>
Concentration :	<u>1 mg/ml</u>
Storage_stability :	<u>-20°C/1 year</u>
Msds :	<u>MSDS_Antibody.pdf</u>



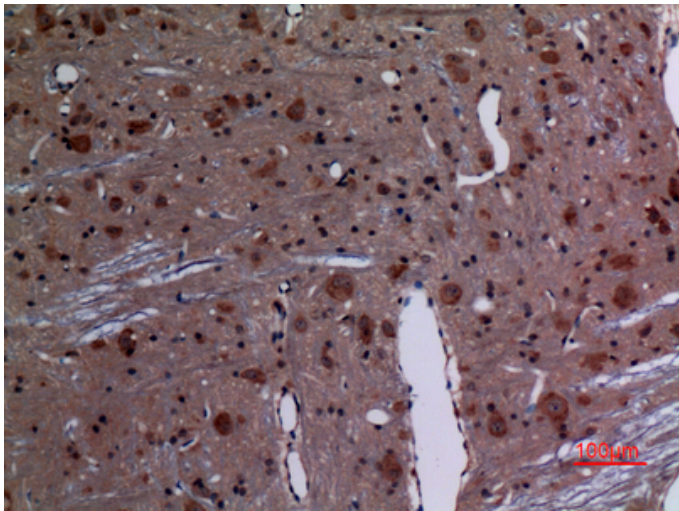
Other_name : RAB26; Ras-related protein Rab-26

Molecular Weight : 27KD

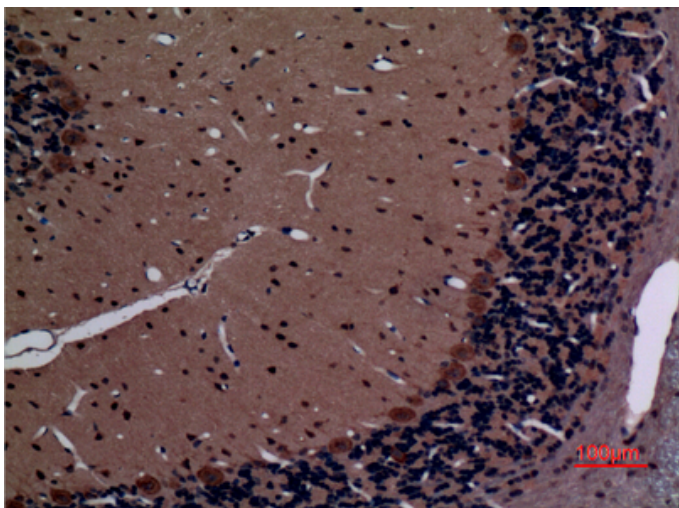
Product Images



Western Blot analysis of extracts from K562 cells, using Rab 26 Polyclonal Antibody.. Secondary antibody was diluted at 1:20000



Immunohistochemical analysis of paraffin-embedded rat-brain, antibody was diluted at 1:100



Immunohistochemical analysis of paraffin-embedded rat-brain, antibody was diluted at 1:100