

SV2C Polyclonal Antibody

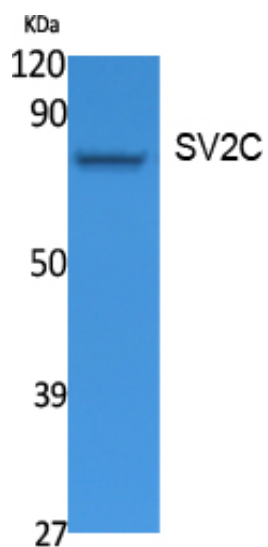
Catalog_no :	AT5077
Applications :	WB,IHC-p,ELISA
Reactivity :	Human,Mouse,Rat
Category :	抗原抗体
Size :	100µg/50µg/20µg
Gene_name :	SV2C
Protein_name :	Synaptic vesicle glycoprotein 2C
Humangene_id :	22987
Humanswissprot_no :	Q496J9
Mousegene_id :	75209
Mouseswissprot_no :	Q69ZS6
Ratgene_id :	29643
Ratswissprot_no :	Q9Z2I6
Immunogen :	Synthesized peptide derived from the Internal region of human SV2C.
Specificity :	SV2C Polyclonal Antibody detects endogenous levels of SV2C protein.
Formulation :	Liquid in PBS containing 50% glycerol, 0.5% BSA and 0.02% sodium azide.
Source :	Rabbit
Dilution :	Western Blot: 1/500 - 1/2000. IHC-p: 1:100-300 ELISA: 1/20000. Not yet tested in other applications.
Purification :	The antibody was affinity-purified from rabbit antiserum by affinity-chromatography using epitope-specific immunogen.
Concentration :	1 mg/ml
Storage_stability :	-20°C/1 year
Msds :	MSDS_Antibody.pdf



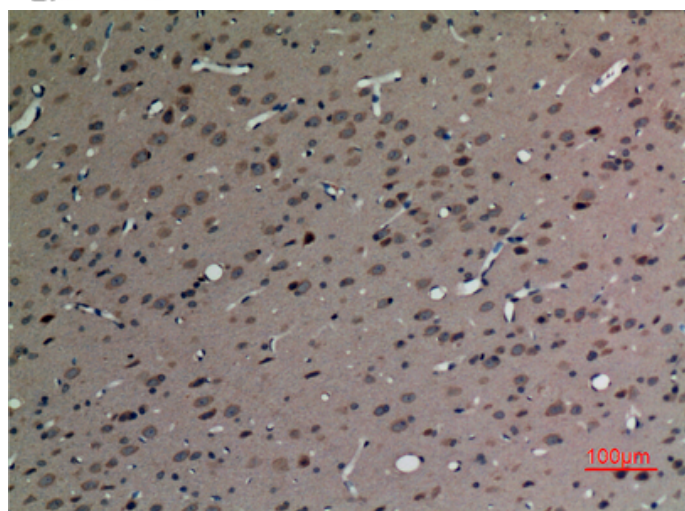
Other_name : SV2C; KIAA1054; Synaptic vesicle glycoprotein 2C

Molecular Weight : 82KD

Product Images



Western Blot analysis of extracts from Jurkat cells, using SV2C Polyclonal Antibody.. Secondary antibody was diluted at 1:20000



Immunohistochemical analysis of paraffin-embedded rat-brain, antibody was diluted at 1:100