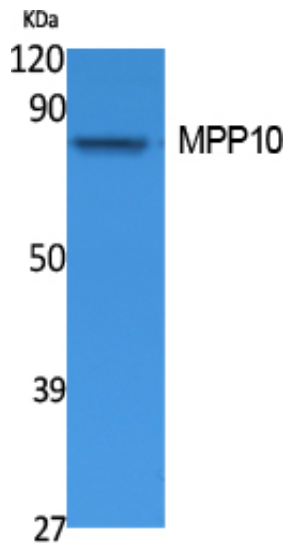




MPP10 Polyclonal Antibody

Catalog_no :	AT5079
Applications :	WB,ELISA
Reactivity :	Human
Category :	抗原抗体
Size :	100µg/50µg/20µg
Gene_name :	MPHOSPH10
Protein_name :	U3 small nucleolar ribonucleoprotein protein MPP10
Humangene_id :	10199
Humanswissprot_no :	O00566
Immunogen :	Synthesized peptide derived from MPP10 . at AA range: 60-140
Specificity :	MPP10 Polyclonal Antibody detects endogenous levels of MPP10 protein.
Formulation :	Liquid in PBS containing 50% glycerol, 0.5% BSA and 0.02% sodium azide.
Source :	Rabbit
Dilution :	Western Blot: 1/500 - 1/2000. ELISA: 1/10000. Not yet tested in other applications.
Purification :	The antibody was affinity-purified from rabbit antiserum by affinity-chromatography using epitope-specific immunogen.
Concentration :	1 mg/ml
Storage_stability :	-20°C/1 year
Msds :	MSDS_Antibody.pdf
Other_name :	MPHOSPH10; MPP10; U3 small nucleolar ribonucleoprotein protein MPP10; M phase phosphoprotein 10
Molecular Weight :	78KD

Product Images



Western Blot analysis of extracts from Jurkat cells, using MPP10 Polyclonal Antibody.. Secondary antibody was diluted at 1:20000 cells nucleus extracted by Minute TM Cytoplasmic and Nuclear Fractionation kit (SC-003, Inventbiotech, MN, USA).