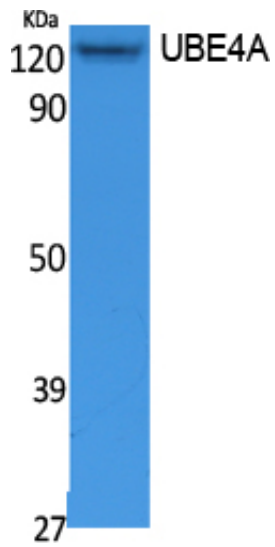




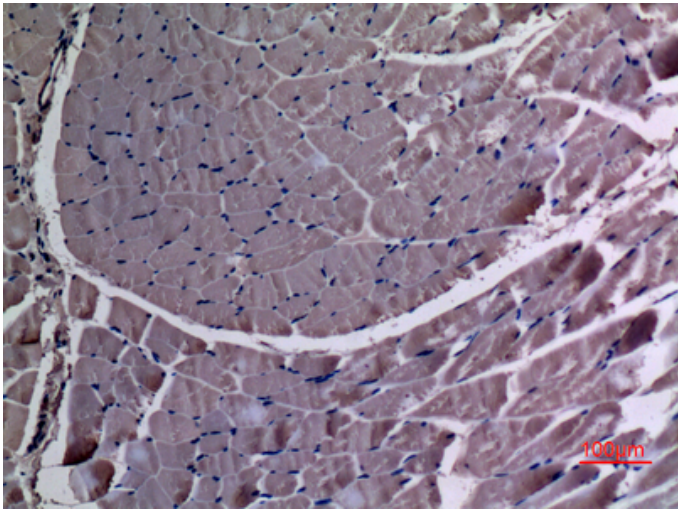
UBE4A Polyclonal Antibody

Catalog_no :	AT5080
Applications :	WB,IHC-p,ELISA
Reactivity :	Human,Mouse,Rat
Category :	抗原抗体
Size :	100µg/50µg/20µg
Gene_name :	UBE4A
Protein_name :	Ubiquitin conjugation factor E4 A
Humangene_id :	9354
Humanswissprot_no :	Q14139
Ratgene_id :	315608
Ratswissprot_no :	Q6P7A2
Immunogen :	Synthesized peptide derived from the N-terminal region of human UBE4A.
Specificity :	UBE4A Polyclonal Antibody detects endogenous levels of UBE4A protein.
Formulation :	Liquid in PBS containing 50% glycerol, 0.5% BSA and 0.02% sodium azide.
Source :	Rabbit
Dilution :	Western Blot: 1/500 - 1/2000. IHC-p: 1:100-300 ELISA: 1/10000. Not yet tested in other applications.
Purification :	The antibody was affinity-purified from rabbit antiserum by affinity-chromatography using epitope-specific immunogen.
Concentration :	1 mg/ml
Storage_stability :	-20°C/1 year
Msds :	MSDS_Antibody.pdf
Other_name :	UBE4A; KIAA0126; Ubiquitin conjugation factor E4 A
Molecular Weight :	122KD

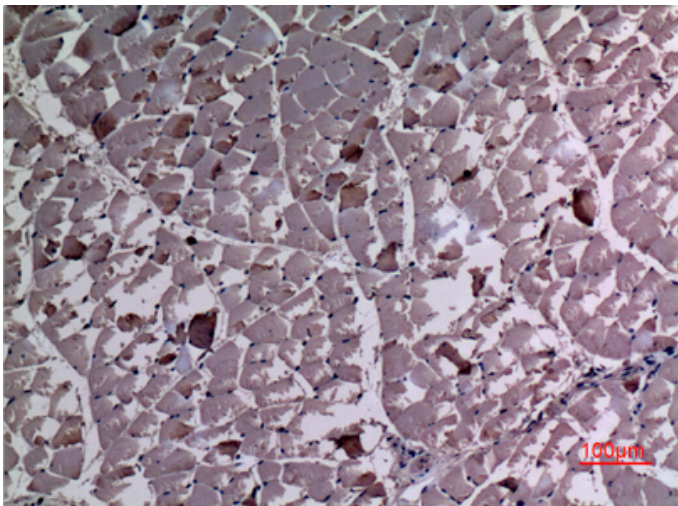
Product Images



Western Blot analysis of extracts from Jurkat cells, using UBE4A Polyclonal Antibody.. Secondary antibody was diluted at 1:20000



Immunohistochemical analysis of paraffin-embedded rat-muscle, antibody was diluted at 1:100



Immunohistochemical analysis of paraffin-embedded rat-muscle, antibody was diluted at 1:100

Immunohistochemical analysis of paraffin-embedded mouse-muscle, antibody was diluted at 1:100

