

## UBE2A/B Polyclonal Antibody

Catalog_no :	AT5081
Applications :	WB,IHC-p,ELISA
Reactivity :	Human,Mouse,Rat
Category :	抗原抗体
Size :	100µg/50µg/20µg
Gene_name :	UBE2A/UBE2B
Protein_name :	Ubiquitin-conjugating enzyme E2 A/Ubiquitin-conjugating enzyme E2 B
Humangene_id :	<a href="#">7320</a>
Humanswissprot_no :	<a href="#">P49459/P63146</a>
Mousegene_id :	
Ratgene_id :	<a href="#">81816</a>
Ratswissprot_no :	<a href="#">P63149</a>
Immunogen :	Synthesized peptide derived from the C-terminal region of human UBE2A/B.
Specificity :	UBE2A/B Polyclonal Antibody detects endogenous levels of UBE2A/B protein.
Formulation :	Liquid in PBS containing 50% glycerol, 0.5% BSA and 0.02% sodium azide.
Source :	Rabbit
Dilution :	Western Blot: 1/500 - 1/2000. IHC-p: 1:100-300 ELISA: 1/10000. Not yet tested in other applications.
Purification :	The antibody was affinity-purified from rabbit antiserum by affinity-chromatography using epitope-specific immunogen.
Concentration :	1 mg/ml
Storage_stability :	-20°C/1 year
Msds :	<a href="#">MSDS_Antibody.pdf</a>
Other_name :	UBE2A; RAD6A; Ubiquitin-conjugating enzyme E2 A; RAD6 homolog A; HR6A; hHR6A; Ubiquitin carrier protein A; Ubiquitin-protein ligase A; UBE2B; RAD6B; Ubiquitin-conjugating enzyme E2 B;RAD6 homolog B; HR6B; hHR6B; Ubiquitin carrier protein B;



Ubiquitin-conjugating enzyme E2-17 kDa; Ubiquitin-protein ligase B

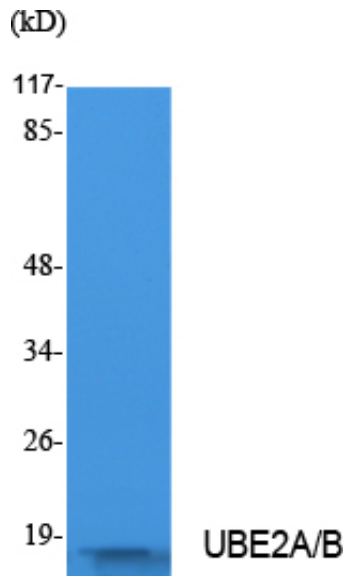
---

Molecular  
Weight :

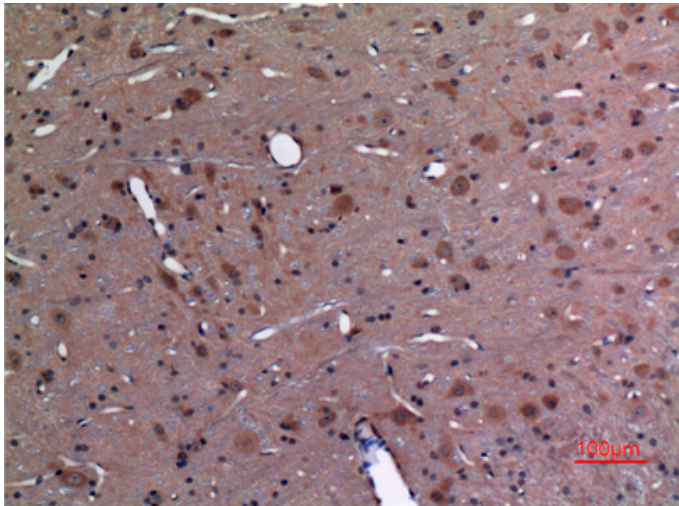
17KD

---

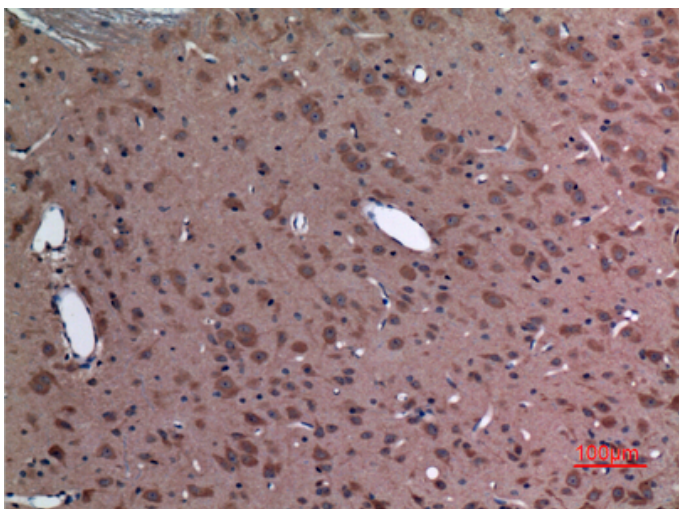
## Product Images



Western Blot analysis of extracts from Jurkat cells, using UBE2A/B Polyclonal Antibody.. Secondary antibody was diluted at 1:20000



Immunohistochemical analysis of paraffin-embedded rat-brain, antibody was diluted at 1:100



Immunohistochemical analysis of paraffin-embedded rat-brain, antibody was diluted at 1:100

Immunohistochemical analysis of paraffin-embedded mouse-brain, antibody was diluted at 1:100

