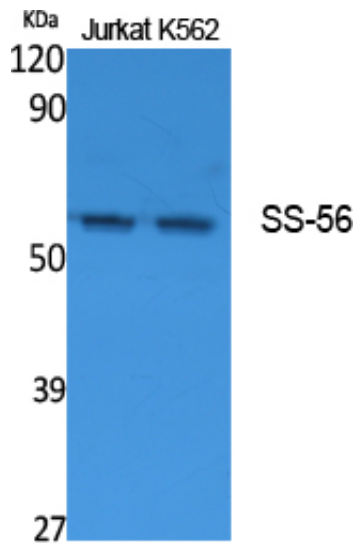




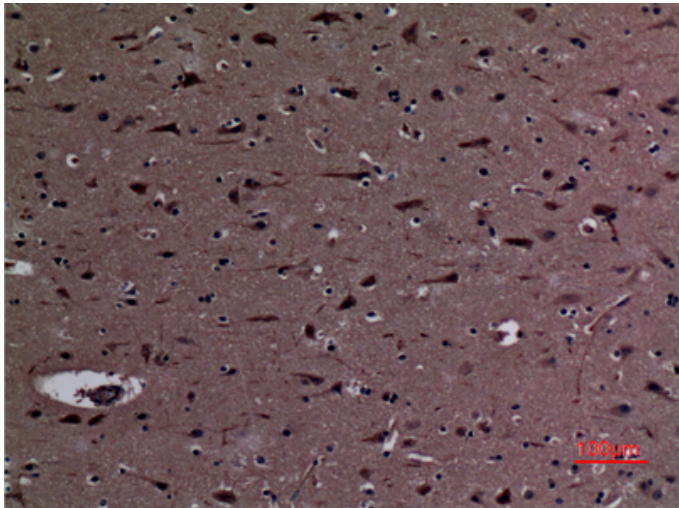
SS-56 Polyclonal Antibody

Catalog_no :	AT5082
Applications :	WB,IHC-p,ELISA
Reactivity :	Human
Category :	抗原抗体
Size :	100µg/50µg/20µg
Gene_name :	TRIM68
Protein_name :	E3 ubiquitin-protein ligase TRIM68
Humangene_id :	55128
Humanswissprot_no :	Q6AZZ1
Immunogen :	Synthesized peptide derived from the Internal region of human SS-56.
Specificity :	SS-56 Polyclonal Antibody detects endogenous levels of SS-56 protein.
Formulation :	Liquid in PBS containing 50% glycerol, 0.5% BSA and 0.02% sodium azide.
Source :	Rabbit
Dilution :	Western Blot: 1/500 - 1/2000. IHC-p: 1:100-300 ELISA: 1/40000. Not yet tested in other applications.
Purification :	The antibody was affinity-purified from rabbit antiserum by affinity-chromatography using epitope-specific immunogen.
Concentration :	1 mg/ml
Storage_stability :	-20°C/1 year
Msds :	MSDS_Antibody.pdf
Other_name :	TRIM68; GC109; RNF137; SS56; E3 ubiquitin-protein ligase TRIM68; RING finger protein 137; SSA protein SS-56; SS-56; Tripartite motif-containing protein 68
Molecular Weight :	56KD

Product Images



Western Blot analysis of extracts from Jurkat, K562 cells, using SS-56 Polyclonal Antibody.. Secondary antibody was diluted at 1:20000



Immunohistochemical analysis of paraffin-embedded human-brain, antibody was diluted at 1:100