

TudorSN Polyclonal Antibody

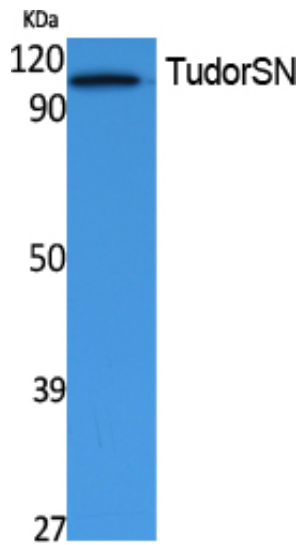
Catalog_no :	AT5084
Applications :	WB,IHC-p,ELISA
Reactivity :	Human,Mouse,Rat
Category :	抗原抗体
Size :	100µg/50µg/20µg
Gene_name :	SND1
Protein_name :	Staphylococcal nuclease domain-containing protein 1
Humangene_id :	27044
Humanswissprot_no :	Q7KZF4
Mousegene_id :	56463
Mouseswissprot_no :	Q78PY7
Ratgene_id :	64635
Ratswissprot_no :	Q66X93
Immunogen :	Synthesized peptide derived from the Internal region of human TudorSN.
Specificity :	TudorSN Polyclonal Antibody detects endogenous levels of TudorSN protein.
Formulation :	Liquid in PBS containing 50% glycerol, 0.5% BSA and 0.02% sodium azide.
Source :	Rabbit
Dilution :	Western Blot: 1/500 - 1/2000. IHC-p: 1:100-300 ELISA: 1/40000. Not yet tested in other applications.
Purification :	The antibody was affinity-purified from rabbit antiserum by affinity-chromatography using epitope-specific immunogen.
Concentration :	1 mg/ml
Storage_stability :	-20°C/1 year
Msds :	MSDS_Antibody.pdf



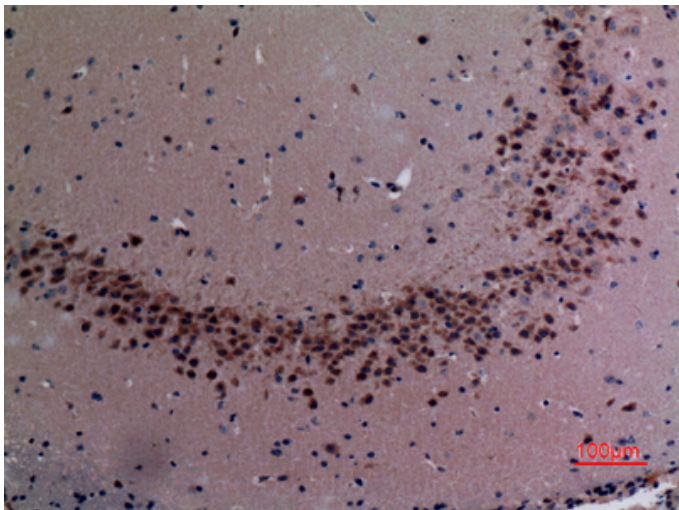
Other_name : SND1; TDRD11; Staphylococcal nuclease domain-containing protein 1; 100 kDa coactivator; EBNA2 coactivator p100; Tudor domain-containing protein 11; p100 co-activator

Molecular Weight : 101KD

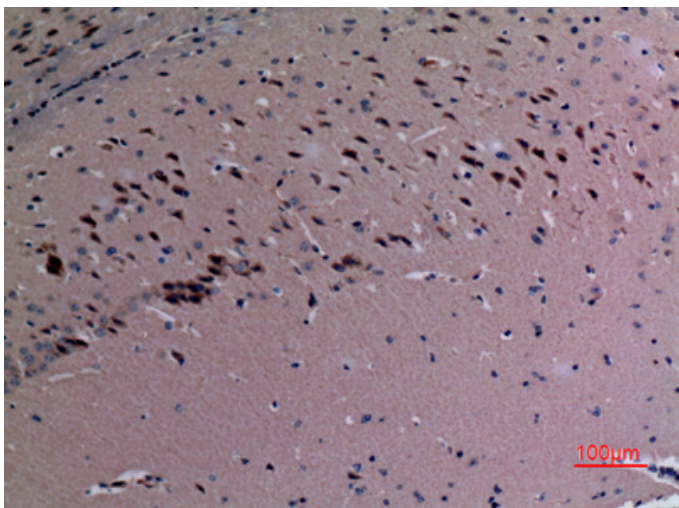
Product Images



Western Blot analysis of extracts from Jurkat cells, using TudorSN Polyclonal Antibody.. Secondary antibody was diluted at 1:20000



Immunohistochemical analysis of paraffin-embedded mouse-brain, antibody was diluted at 1:100



Immunohistochemical analysis of paraffin-embedded mouse-brain, antibody was diluted at 1:100

Immunohistochemical analysis of paraffin-embedded mouse-brain, antibody was diluted at 1:100

