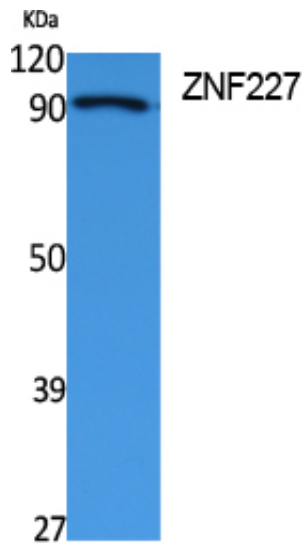




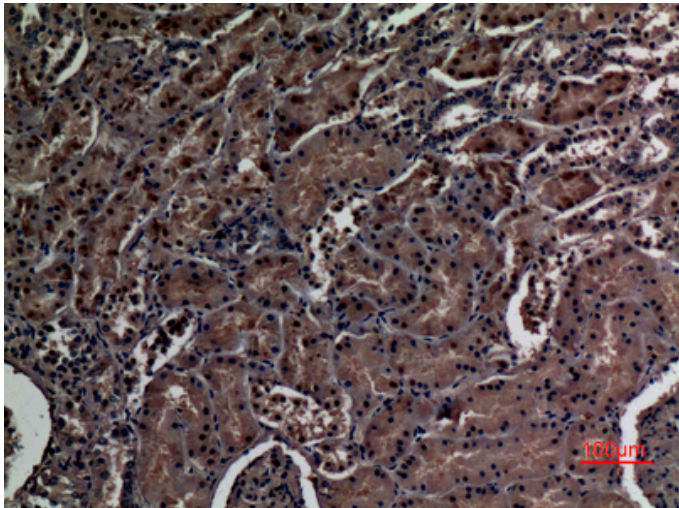
ZNF227 Polyclonal Antibody

Catalog_no :	AT5085
Applications :	WB,IHC-p,ELISA
Reactivity :	Human
Category :	抗原抗体
Size :	100µg/50µg/20µg
Gene_name :	ZNF227
Protein_name :	Zinc finger protein 227
Humangene_id :	7770
Humanswissprot_no :	Q86WZ6
Immunogen :	Synthesized peptide derived from the Internal region of human ZNF227.
Specificity :	ZNF227 Polyclonal Antibody detects endogenous levels of ZNF227 protein.
Formulation :	Liquid in PBS containing 50% glycerol, 0.5% BSA and 0.02% sodium azide.
Source :	Rabbit
Dilution :	Western Blot: 1/500 - 1/2000. IHC-p: 1:100-300 ELISA: 1/40000. Not yet tested in other applications.
Purification :	The antibody was affinity-purified from rabbit antiserum by affinity-chromatography using epitope-specific immunogen.
Concentration :	1 mg/ml
Storage_stability :	-20°C/1 year
Msds :	MSDS_Antibody.pdf
Other_name :	ZNF227; Zinc finger protein 227
Molecular Weight :	92KD

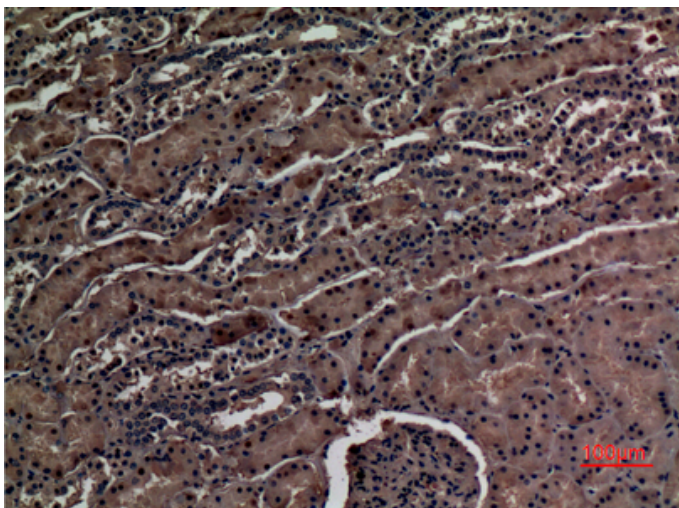
Product Images



Western Blot analysis of extracts from Jurkat cells, using ZNF227 Polyclonal Antibody.. Secondary antibody was diluted at 1:20000 cells nucleus extracted by Minute TM Cytoplasmic and Nuclear Fractionation kit (SC-003, Inventbiotech, MN, USA).



Immunohistochemical analysis of paraffin-embedded human kidney, antibody was diluted at 1:100



Immunohistochemical analysis of paraffin-embedded human kidney, antibody was diluted at 1:100

Immunohistochemical analysis of paraffin-embedded human stomach, antibody was diluted at 1:100

