



Smad5 Polyclonal Antibody

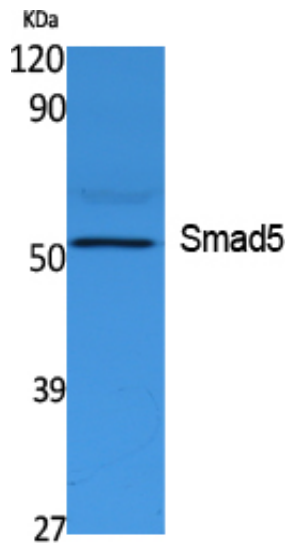
Catalog_no :	AT5087
Applications :	WB,IHC-p,ELISA
Reactivity :	Human,Rat
Category :	抗原抗体
Size :	100µg/50µg/20µg
Gene_name :	SMAD5
Protein_name :	Mothers against decapentaplegic homolog 5
Humangene_id :	4090
Humanswissprot_no :	Q99717
Ratgene_id :	59328
Ratswissprot_no :	Q9R1V3
Immunogen :	Synthesized peptide derived from the Internal region of human Smad5.
Specificity :	Smad5 Polyclonal Antibody detects endogenous levels of Smad5 protein.
Formulation :	Liquid in PBS containing 50% glycerol, 0.5% BSA and 0.02% sodium azide.
Source :	Rabbit
Dilution :	Western Blot: 1/500 - 1/2000. IHC-p: 1:100-300 ELISA: 1/40000. Not yet tested in other applications.
Purification :	The antibody was affinity-purified from rabbit antiserum by affinity-chromatography using epitope-specific immunogen.
Concentration :	1 mg/ml
Storage_stability :	-20°C/1 year
Msds :	MSDS_Antibody.pdf
Other_name :	SMAD5; MADH5; Mothers against decapentaplegic homolog 5; MAD homolog 5; Mothers against DPP homolog 5; JV5-1; SMAD family member 5; SMAD 5; Smad5; hSmad5
Molecular Weight :	52KD



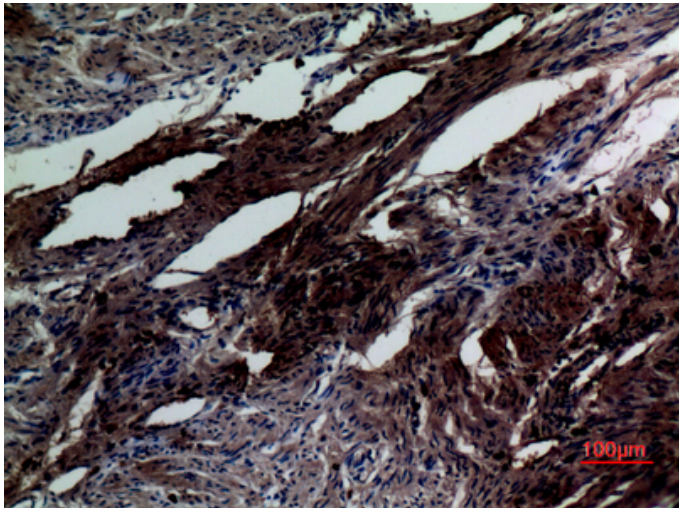
专注二抗产品

Biodragon旗下品牌

Product Images



Western Blot analysis of extracts from K562 cells, using Smad5 Polyclonal Antibody.. Secondary antibody was diluted at 1:20000



Immunohistochemical analysis of paraffin-embedded human-uterus, antibody was diluted at 1:100