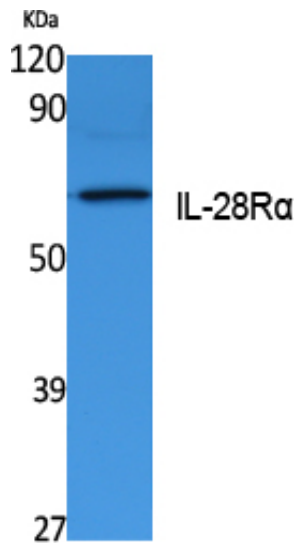




IL-28R α Polyclonal Antibody

| | |
|---------------------|---|
| Catalog_no : | AT5089 |
| Applications : | WB,ELISA |
| Reactivity : | Human |
| Category : | 抗原抗体 |
| Size : | 100 μ g/50 μ g/20 μ g |
| Gene_name : | IL28RA |
| Protein_name : | Interleukin-28 receptor subunit alpha |
| Humangene_id : | 163702 |
| Humanswissprot_no : | Q8IU57 |
| Immunogen : | Synthesized peptide derived from the Internal region of human IL-28R α . |
| Specificity : | IL-28R α Polyclonal Antibody detects endogenous levels of IL-28R α protein. |
| Formulation : | Liquid in PBS containing 50% glycerol, 0.5% BSA and 0.02% sodium azide. |
| Source : | Rabbit |
| Dilution : | Western Blot: 1/500 - 1/2000. ELISA: 1/40000. Not yet tested in other applications. |
| Purification : | The antibody was affinity-purified from rabbit antiserum by affinity-chromatography using epitope-specific immunogen. |
| Concentration : | 1 mg/ml |
| Storage_stability : | -20°C/1 year |
| Msds : | MSDS_Antibody.pdf |
| Other_name : | IL28RA; IFNLR1; LICR2; Interleukin-28 receptor subunit alpha; IL-28 receptor subunit alpha; IL-28R-alpha; IL-28RA; Cytokine receptor class-II member 12; Cytokine receptor family 2 member 12;CRF2-12; Interferon lambda receptor 1; IFN-lambda receptor 1; IFN-lambda-R1; Likely interleukin or cytokine receptor 2; LICR2 |
| Molecular Weight : | 57KD |

Product Images



Western Blot analysis of extracts from K562 cells, using IL-28Rα Polyclonal Antibody.. Secondary antibody was diluted at 1:20000