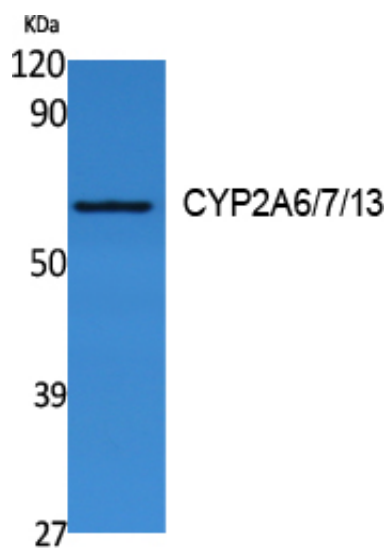


CYP2A6/7/13 Polyclonal Antibody

Catalog_no :	AT5093
Applications :	WB,ELISA
Reactivity :	Human
Category :	抗原抗体
Size :	100µg/50µg/20µg
Gene_name :	CYP2A6/CYP2A7/CYP2A13
Protein_name :	Cytochrome P450 2A6/Cytochrome P450 2A7/Cytochrome P450 2A13
Humangene_id :	1553
Humanswissprot_no :	P11509/P20853/Q16696
Immunogen :	Synthesized peptide derived from the Internal region of human CYP2A6/7/13.
Specificity :	CYP2A6/7/13 Polyclonal Antibody detects endogenous levels of CYP2A6/7/13 protein.
Formulation :	Liquid in PBS containing 50% glycerol, 0.5% BSA and 0.02% sodium azide.
Source :	Rabbit
Dilution :	Western Blot: 1/500 - 1/2000. ELISA: 1/40000. Not yet tested in other applications.
Purification :	The antibody was affinity-purified from rabbit antiserum by affinity-chromatography using epitope-specific immunogen.
Concentration :	1 mg/ml
Storage_stability :	-20°C/1 year
Msds :	MSDS_Antibody.pdf
Other_name :	CYP2A6; CYP2A3; Cytochrome P450 2A6; 1,4-cineole 2-exo-monooxygenase; CYP1IA6; Coumarin 7-hydroxylase; Cytochrome P450 IIA3; Cytochrome P450(I); CYP2A7; Cytochrome P450 2A7; CYP1IA7; Cytochrome P450 IIA4; CYP2A13; Cytochrome P450 2A13; CYP1IA13
Molecular Weight :	56KD

Product Images



Western Blot analysis of extracts from Jurkat cells, using CYP2A6/7/13 Polyclonal Antibody.. Secondary antibody was diluted at 1:20000