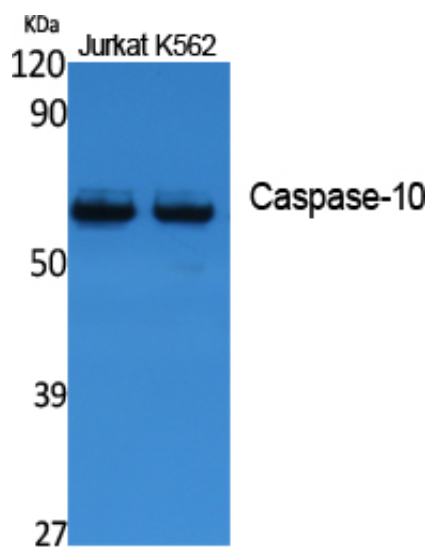




## Caspase-10 Polyclonal Antibody

Catalog_no :	AT5094
Applications :	WB,ELISA
Reactivity :	Human
Category :	抗原抗体
Size :	100µg/50µg/20µg
Gene_name :	CASP10
Protein_name :	Caspase-10
Humangene_id :	<a href="#">843</a>
Humanswissprot_no :	<a href="#">Q92851</a>
Immunogen :	Synthesized peptide derived from the Internal region of human Caspase-10.
Specificity :	Caspase-10 Polyclonal Antibody detects endogenous levels of Caspase-10 protein.
Formulation :	Liquid in PBS containing 50% glycerol, 0.5% BSA and 0.02% sodium azide.
Source :	Rabbit
Dilution :	Western Blot: 1/500 - 1/2000. ELISA: 1/40000. Not yet tested in other applications.
Purification :	The antibody was affinity-purified from rabbit antiserum by affinity-chromatography using epitope-specific immunogen.
Concentration :	1 mg/ml
Storage_stability :	-20°C/1 year
Msds :	MSDS_Antibody.pdf
Other_name :	CASP10; MCH4; Caspase-10; CASP-10; Apoptotic protease Mch-4; FAS-associated death domain protein interleukin-1B-converting enzyme 2; FLICE2; ICE-like apoptotic protease 4
Molecular Weight :	58KD

## Product Images



Western Blot analysis of extracts from Jurkat, K562 cells, using Caspase-10 Polyclonal Antibody.. Secondary antibody was diluted at 1:20000