



NF-L Polyclonal Antibody

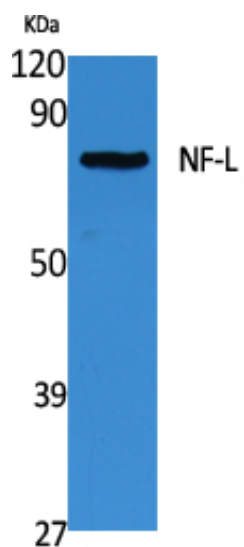
Catalog_no :	<u>AT5096</u>
Applications :	<u>WB,IHC-p,ELISA</u>
Reactivity :	<u>Human,Mouse,Rat</u>
Category :	<u>抗原抗体</u>
Size :	<u>100µg/50µg/20µg</u>
Gene_name :	<u>NEFL</u>
Protein_name :	<u>Neurofilament light polypeptide</u>
Humangene_id	<u>4747</u>
:	<u></u>
Humanswissprot	<u>P07196</u>
_no :	<u></u>
Mousegene_id :	<u>18039</u>
Mouseswissprot	<u>P08551</u>
_no :	<u></u>
Ratgene_id :	<u>83613</u>
Ratswissprot_no	<u>P19527</u>
:	<u></u>
Immunogen :	<u>Synthesized peptide derived from the C-terminal region of human NF-L.</u>
Specificity :	<u>NF-L Polyclonal Antibody detects endogenous levels of NF-L protein.</u>
Formulation :	<u>Liquid in PBS containing 50% glycerol, 0.5% BSA and 0.02% sodium azide.</u>
Source :	<u>Rabbit</u>
Dilution :	<u>Western Blot: 1/500 - 1/2000. IHC-p: 1:100-300 ELISA: 1/40000. Not yet tested in other applications.</u>
Purification :	<u>The antibody was affinity-purified from rabbit antiserum by affinity-chromatography using epitope-specific immunogen.</u>
Concentration :	<u>1 mg/ml</u>
Storage_stability	<u>-20°C/1 year</u>
:	<u></u>
Msds :	<u>MSDS_Antibody.pdf</u>



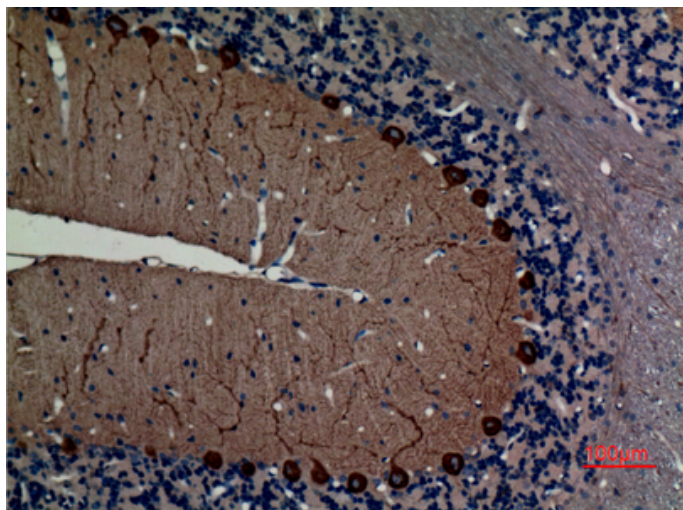
Other_name : NEFL; NF68; NFL; Neurofilament light polypeptide; NF-L; 68 kDa neurofilament protein;
Neurofilament triplet L protein

Molecular Weight : 61KD

Product Images



Western Blot analysis of extracts from Jurkat cells, using NF-L Polyclonal Antibody.. Secondary antibody was diluted at 1:20000



Immunohistochemical analysis of paraffin-embedded rat-brain, antibody was diluted at 1:100