

NTT4 Polyclonal Antibody

Catalog_no :	<u>AT5097</u>
Applications :	<u>WB,ELISA</u>
Reactivity :	<u>Human,Mouse,Rat</u>
Category :	<u>抗原抗体</u>
Size :	<u>100µg/50µg/20µg</u>
Gene_name :	<u>SLC6A17</u>
Protein_name :	<u>Sodium-dependent neutral amino acid transporter SLC6A17</u>
Humangene_id :	<u>388662</u>
Humanswissprot_no :	<u>Q9H1V8</u>
Mousegene_id :	<u>229706</u>
Mouseswissprot_no :	<u>Q8BJI1</u>
Ratgene_id :	<u>613226</u>
Ratswissprot_no :	<u>P31662</u>
Immunogen :	<u>Synthesized peptide derived from NTT4 . at AA range: 240-320</u>
Specificity :	<u>NTT4 Polyclonal Antibody detects endogenous levels of NTT4 protein.</u>
Formulation :	<u>Liquid in PBS containing 50% glycerol, 0.5% BSA and 0.02% sodium azide.</u>
Source :	<u>Rabbit</u>
Dilution :	<u>Western Blot: 1/500 - 1/2000. ELISA: 1/5000. Not yet tested in other applications.</u>
Purification :	<u>The antibody was affinity-purified from rabbit antiserum by affinity-chromatography using epitope-specific immunogen.</u>
Concentration :	<u>1 mg/ml</u>
Storage_stability :	<u>-20°C/1 year</u>
Msds :	<u>MSDS_Antibody.pdf</u>
Other_name :	<u>SLC6A17; NTT4; Sodium-dependent neutral amino acid transporter SLC6A17; Sodium-</u>

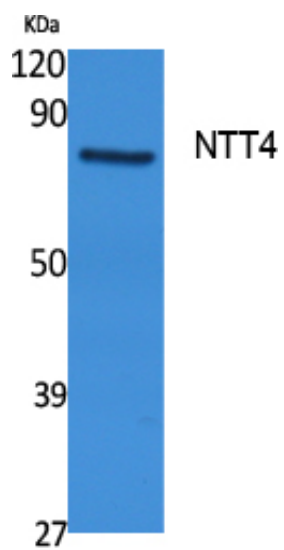


dependent neurotransmitter transporter NTT4; Solute carrier family 6 member 17

Molecular
Weight :

81KD

Product Images



Western Blot analysis of extracts from rat stomach, using NTT4 Polyclonal Antibody.. Secondary antibody was diluted at 1:20000