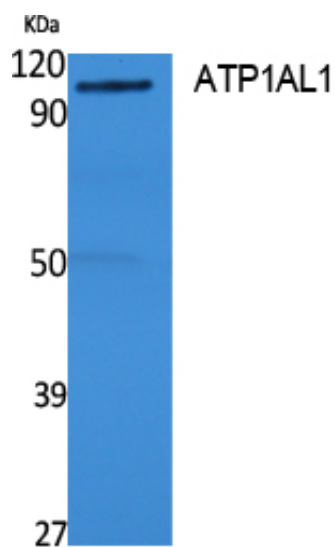




ATP1AL1 Polyclonal Antibody

Catalog_no :	AT5099
Applications :	WB,ELISA
Reactivity :	Human,Rat
Category :	抗原抗体
Size :	100µg/50µg/20µg
Gene_name :	ATP12A
Protein_name :	Potassium-transporting ATPase alpha chain 2
Humangene_id :	479
Humanswissprot_no :	P54707
Immunogen :	Synthesized peptide derived from ATP1AL1 . at AA range: 380-460
Specificity :	ATP1AL1 Polyclonal Antibody detects endogenous levels of ATP1AL1 protein.
Formulation :	Liquid in PBS containing 50% glycerol, 0.5% BSA and 0.02% sodium azide.
Source :	Rabbit
Dilution :	Western Blot: 1/500 - 1/2000. ELISA: 1/20000. Not yet tested in other applications.
Purification :	The antibody was affinity-purified from rabbit antiserum by affinity-chromatography using epitope-specific immunogen.
Concentration :	1 mg/ml
Storage_stability :	-20°C/1 year
Msds :	MSDS_Antibody.pdf
Other_name :	ATP12A; ATP1AL1; Potassium-transporting ATPase alpha chain 2; Non-gastric H(+)/K(+) ATPase subunit alpha; Proton pump
Molecular Weight :	115KD

Product Images



Western Blot analysis of extracts from rat stomach, using ATP1AL1 Polyclonal Antibody.. Secondary antibody was diluted at 1:20000