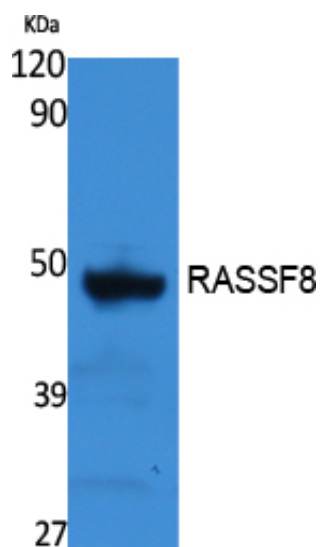




RASSF8 Polyclonal Antibody

Catalog_no :	AT5100
Applications :	WB,ELISA
Reactivity :	Human,Rat
Category :	抗原抗体
Size :	100µg/50µg/20µg
Gene_name :	RASSF8
Protein_name :	Ras association domain-containing protein 8
Humangene_id :	11228
Humanswissprot_no :	Q8NHQ8
Immunogen :	Synthesized peptide derived from RASSF8 . at AA range: 60-140
Specificity :	RASSF8 Polyclonal Antibody detects endogenous levels of RASSF8 protein.
Formulation :	Liquid in PBS containing 50% glycerol, 0.5% BSA and 0.02% sodium azide.
Source :	Rabbit
Dilution :	Western Blot: 1/500 - 1/2000. ELISA: 1/40000. Not yet tested in other applications.
Purification :	The antibody was affinity-purified from rabbit antiserum by affinity-chromatography using epitope-specific immunogen.
Concentration :	1 mg/ml
Storage_stability :	-20°C/1 year
Msds :	MSDS_Antibody.pdf
Other_name :	RASSF8; C12orf2; Ras association domain-containing protein 8; Carcinoma-associated protein HOJ-1
Molecular Weight :	48KD

Product Images



Western Blot analysis of extracts from rat stomach, using RASSF8 Polyclonal Antibody.. Secondary antibody was diluted at 1:20000