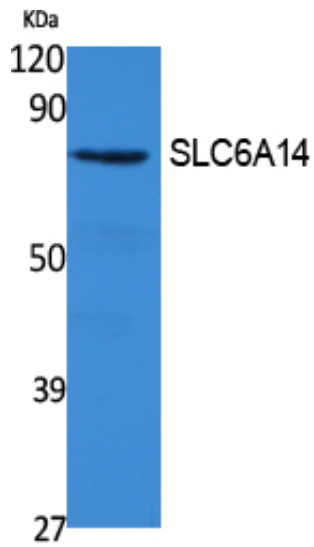




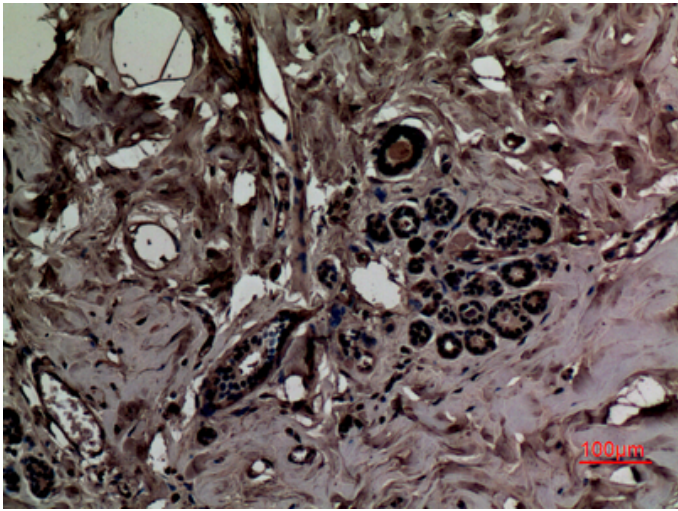
## SLC6A14 Polyclonal Antibody

Catalog_no :	AT5102
Applications :	WB,IHC-p,ELISA
Reactivity :	Human
Category :	抗原抗体
Size :	100µg/50µg/20µg
Gene_name :	SLC6A14
Protein_name :	Sodium- and chloride-dependent neutral and basic amino acid transporter B(0+)
Humangene_id :	<a href="#">11254</a>
Humanswissprot_no :	<a href="#">Q9UN76</a>
Immunogen :	Synthesized peptide derived from the C-terminal region of human SLC6A14.
Specificity :	SLC6A14 Polyclonal Antibody detects endogenous levels of SLC6A14 protein.
Formulation :	Liquid in PBS containing 50% glycerol, 0.5% BSA and 0.02% sodium azide.
Source :	Rabbit
Dilution :	Western Blot: 1/500 - 1/2000. IHC-p: 1:100-300 ELISA: 1/40000. Not yet tested in other applications.
Purification :	The antibody was affinity-purified from rabbit antiserum by affinity-chromatography using epitope-specific immunogen.
Concentration :	1 mg/ml
Storage_stability :	-20°C/1 year
Msds :	MSDS_Antibody.pdf
Other_name :	SLC6A14; Sodium- and chloride-dependent neutral and basic amino acid transporter B(0+; Amino acid transporter ATB0+; Solute carrier family 6 member 14
Molecular Weight :	72KD

## Product Images



Western Blot analysis of extracts from 293 cells, using SLC6A14 Polyclonal Antibody.. Secondary antibody was diluted at 1:20000



Immunohistochemical analysis of paraffin-embedded human-breast, antibody was diluted at 1:100