

NCX1 Polyclonal Antibody

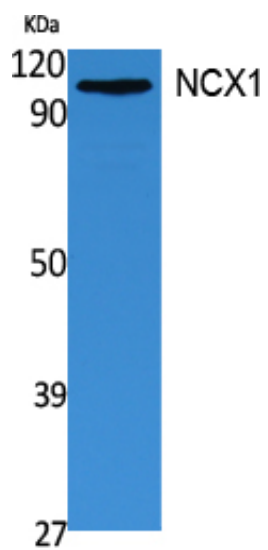
Catalog_no :	<u>AT5103</u>
Applications :	<u>WB,ELISA</u>
Reactivity :	<u>Human,Mouse,Rat</u>
Category :	<u>抗原抗体</u>
Size :	<u>100µg/50µg/20µg</u>
Gene_name :	<u>SLC8A1</u>
Protein_name :	<u>Sodium/calcium exchanger 1</u>
Humangene_id :	<u>6546</u>
Humanswissprot_no :	<u>P32418</u>
Mousegene_id :	<u>20541</u>
Mouseswissprot_no :	<u>P70414</u>
Ratgene_id :	<u>29715</u>
Ratswissprot_no :	<u>Q01728</u>
Immunogen :	<u>Synthesized peptide derived from NCX1 . at AA range: 270-350</u>
Specificity :	<u>NCX1 Polyclonal Antibody detects endogenous levels of NCX1 protein.</u>
Formulation :	<u>Liquid in PBS containing 50% glycerol, 0.5% BSA and 0.02% sodium azide.</u>
Source :	<u>Rabbit</u>
Dilution :	<u>Western Blot: 1/500 - 1/2000. ELISA: 1/5000. Not yet tested in other applications.</u>
Purification :	<u>The antibody was affinity-purified from rabbit antiserum by affinity-chromatography using epitope-specific immunogen.</u>
Concentration :	<u>1 mg/ml</u>
Storage_stability :	<u>-20°C/1 year</u>
Msds :	<u>MSDS_Antibody.pdf</u>
Other_name :	<u>SLC8A1; CNC; NCX1; Sodium/calcium exchanger 1; Na(+)/Ca(2+)-exchange protein 1</u>



Molecular
Weight :

108KD

Product Images



Western Blot analysis of extracts from 293 cells, using NCX1 Polyclonal Antibody.. Secondary antibody was diluted at 1:20000