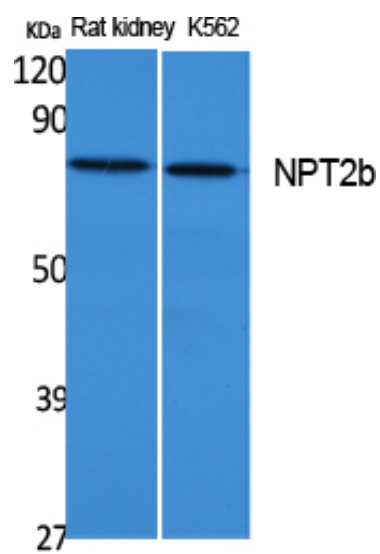




## NPT2b Polyclonal Antibody

Catalog_no :	AT5104
Applications :	WB,ELISA
Reactivity :	Human,Rat
Category :	抗原抗体
Size :	100µg/50µg/20µg
Gene_name :	SLC34A2
Protein_name :	Sodium-dependent phosphate transport protein 2B
Humangene_id :	<a href="#">10568</a>
Humanswissprot_no :	<a href="#">O95436</a>
Immunogen :	Synthesized peptide derived from NPT2b . at AA range: 630-710
Specificity :	NPT2b Polyclonal Antibody detects endogenous levels of NPT2b protein.
Formulation :	Liquid in PBS containing 50% glycerol, 0.5% BSA and 0.02% sodium azide.
Source :	Rabbit
Dilution :	Western Blot: 1/500 - 1/2000. ELISA: 1/20000. Not yet tested in other applications.
Purification :	The antibody was affinity-purified from rabbit antiserum by affinity-chromatography using epitope-specific immunogen.
Concentration :	1 mg/ml
Storage_stability :	-20°C/1 year
Msds :	MSDS_Antibody.pdf
Other_name :	SLC34A2; Sodium-dependent phosphate transport protein 2B; Sodium-phosphate transport protein 2B; Na(+)-dependent phosphate cotransporter 2B; NaPi3b; Sodium/phosphate cotransporter 2B; Na(+)/Pi cotransporter 2B; NaPi-2b; Solute carrier family 34 member 2
Molecular Weight :	75KD

## Product Images



Western Blot analysis of extracts from rat kidney, K562 cells, using NPT2b Polyclonal Antibody.. Secondary antibody was diluted at 1:20000