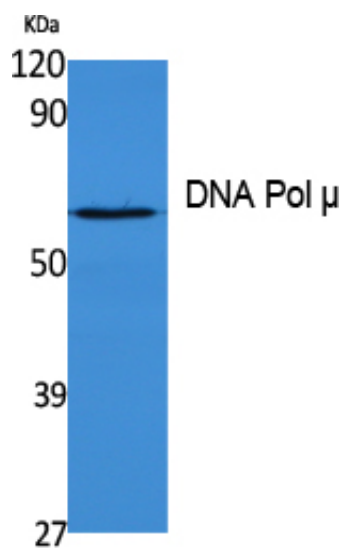




## DNA Pol $\mu$ Polyclonal Antibody

Catalog_no :	AT5105
Applications :	WB,ELISA
Reactivity :	Human
Category :	抗原抗体
Size :	100 $\mu$ g/50 $\mu$ g/20 $\mu$ g
Gene_name :	POLM
Protein_name :	DNA-directed DNA/RNA polymerase mu
Humangene_id :	<a href="#">27434</a>
Humanswissprot_no :	<a href="#">Q9NP87</a>
Immunogen :	Synthesized peptide derived from DNA Pol $\mu$ . at AA range: 210-290
Specificity :	DNA Pol $\mu$ Polyclonal Antibody detects endogenous levels of DNA Pol $\mu$ protein.
Formulation :	Liquid in PBS containing 50% glycerol, 0.5% BSA and 0.02% sodium azide.
Source :	Rabbit
Dilution :	Western Blot: 1/500 - 1/2000. ELISA: 1/40000. Not yet tested in other applications.
Purification :	The antibody was affinity-purified from rabbit antiserum by affinity-chromatography using epitope-specific immunogen.
Concentration :	1 mg/ml
Storage_stability :	-20°C/1 year
Msds :	MSDS_Antibody.pdf
Other_name :	POLM; polmu; DNA-directed DNA/RNA polymerase mu; Pol Mu; Terminal transferase
Molecular Weight :	54KD

## Product Images



Western Blot analysis of extracts from K562 cells, using DNA Pol  $\mu$  Polyclonal Antibody.. Secondary antibody was diluted at 1:20000 cells nucleus extracted by Minute TM Cytoplasmic and Nuclear Fractionation kit (SC-003, Inventbiotech, MN, USA).