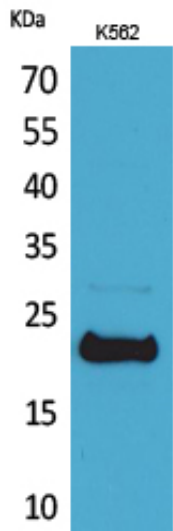


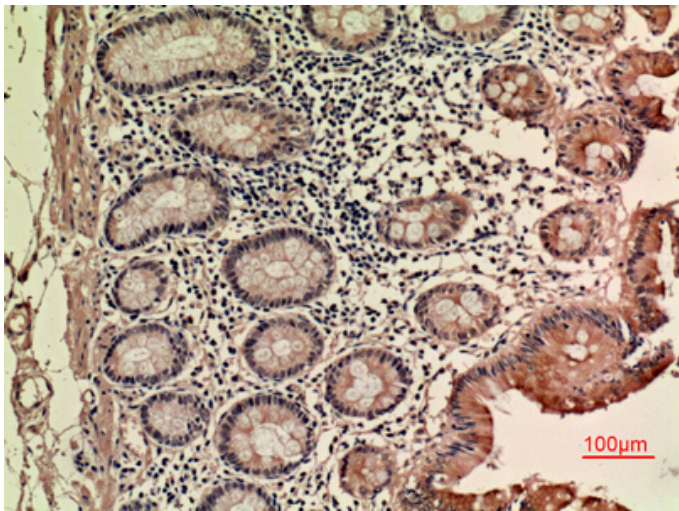
LIF Polyclonal Antibody

Catalog_no :	AT5107
Applications :	WB,IHC-p,ELISA
Reactivity :	Human
Category :	抗原抗体
Size :	100µg/50µg/20µg
Gene_name :	LIF
Protein_name :	Leukemia inhibitory factor
Humangene_id :	3976
Humanswissprot_no :	P15018
Immunogen :	The antiserum was produced against synthesized peptide derived from the C-terminal region of human LIF. AA range:141-190
Specificity :	LIF Polyclonal Antibody detects endogenous levels of LIF protein.
Formulation :	Liquid in PBS containing 50% glycerol, 0.5% BSA and 0.02% sodium azide.
Source :	Rabbit
Dilution :	Western Blot: 1/500 - 1/2000. IHC-p: 1:100-300 ELISA: 1/20000. Not yet tested in other applications.
Purification :	The antibody was affinity-purified from rabbit antiserum by affinity-chromatography using epitope-specific immunogen.
Concentration :	1 mg/ml
Storage_stability :	-20°C/1 year
Msds :	MSDS_Antibody.pdf
Other_name :	LIF; HILDA; Leukemia inhibitory factor; LIF; Differentiation-stimulating factor; D factor; Melanoma-derived LPL inhibitor; MLPLI; Emfilermin
Molecular Weight :	25KD

Product Images



Western Blot analysis of K562 cells using LIF Polyclonal Antibody.. Secondary antibody was diluted at 1:20000



Immunohistochemical analysis of paraffin-embedded human-colon, antibody was diluted at 1:100